

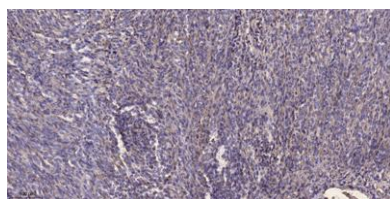
**Palladin rabbit pAb****Cat#: orb768166 (Manual)**

For research use only. Not intended for diagnostic use.

<b>Product Name</b>	Palladin rabbit pAb
<b>Host species</b>	Rabbit
<b>Applications</b>	IHC;IF;ELISA
<b>Species Cross-Reactivity</b>	Human;Mouse
<b>Recommended dilutions</b>	Immunohistochemistry: 1/100 - 1/300. ELISA: 1/20000. Not yet tested in other applications.
<b>Immunogen</b>	Synthesized peptide derived from Palladin . at AA range: 450-530
<b>Specificity</b>	Palladin Polyclonal Antibody detects endogenous levels of Palladin protein.
<b>Formulation</b>	Liquid in PBS containing 50% glycerol, 0.5% BSA and 0.02% sodium azide..
<b>Storage</b>	Store at -20°C. Avoid repeated freeze-thaw cycles.
<b>Protein Name</b>	Palladin
<b>Gene Name</b>	PALLD
<b>Cellular localization</b>	Cytoplasm, cytoskeleton . Cell junction, focal adhesion . Cytoplasm, myofibril, sarcomere, Z line . Cell projection, ruffle . Cell projection, podosome . Cell projection, lamellipodium . Cell projection, axon . Cell projection, growth cone . Localizes to stress fibers and Z lines (PubMed:11598191, PubMed:16125169, PubMed:17322171, PubMed:17537434). Preferentially expressed in the excitatory presynaptic terminals (By similarity). .

<b>Purification</b>	The antibody was affinity-purified from rabbit antiserum by affinity-chromatography using epitope-specific immunogen.
<b>Clonality</b>	Polyclonal
<b>Concentration</b>	1 mg/ml
<b>Observed band</b>	150kD
<b>Human Gene ID</b>	23022
<b>Human Swiss-Prot Number</b>	Q8WX93
<b>Alternative Names</b>	PALLD; KIAA0992; CGI-151; Palladin; SIH002; Sarcoma antigen NY-SAR-77

**Background** This gene encodes a cytoskeletal protein that is required for organizing the actin cytoskeleton. The protein is a component of actin-containing microfilaments, and it is involved in the control of cell shape, adhesion, and contraction. Polymorphisms in this gene are associated with a susceptibility to pancreatic cancer type 1, and also with a risk for myocardial infarction. Alternative splicing results in multiple transcript variants. [provided by RefSeq, Oct 2009],



**Immunohistochemical analysis of paraffin-embedded human Colon cancer. 1, Antibody was diluted at 1:200(4° overnight). 2, Tris-EDTA,pH9.0 was used for antigen retrieval. 3,Secondary antibody was diluted at 1:200(room temperature, 45min).**