

FoxE3 rabbit pAb**Cat#: orb768163 (Manual)**

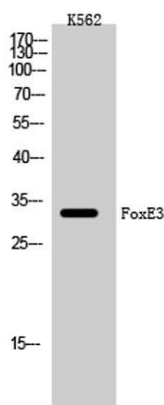
For research use only. Not intended for diagnostic use.

Product Name	FoxE3 rabbit pAb
Host species	Rabbit
Applications	WB;IHC;IF;ELISA
Species Cross-Reactivity	Human;Mouse;Rat
Recommended dilutions	Western Blot: 1/500 - 1/2000. Immunohistochemistry: 1/100 - 1/300. ELISA: 1/20000. Not yet tested in other applications.
Immunogen	The antiserum was produced against synthesized peptide derived from human FOXE3. AA range:81-130
Specificity	FoxE3 Polyclonal Antibody detects endogenous levels of FoxE3 protein.
Formulation	Liquid in PBS containing 50% glycerol, 0.5% BSA and 0.02% sodium azide..
Storage	Store at -20°C. Avoid repeated freeze-thaw cycles.
Protein Name	Forkhead box protein E3
Gene Name	FOXE3
Cellular localization	Nucleus .
Purification	The antibody was affinity-purified from rabbit antiserum by affinity-chromatography using epitope-specific immunogen.
Clonality	Polyclonal

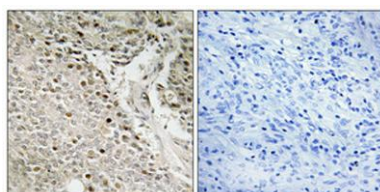
Concentration	1 mg/ml
Observed band	33kD
Human Gene ID	2301
Human Swiss-Prot Number	Q13461
Alternative Names	FOX E3; FKHL12; FREAC8; Forkhead box protein E3; Forkhead-related protein FKHL12; Forkhead-related transcription factor 8; FREAC-8

Background

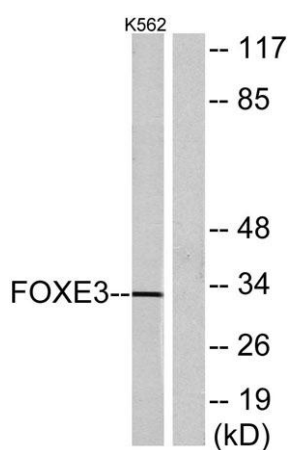
This intronless gene belongs to the forkhead family of transcription factors, which is characterized by a distinct forkhead domain. The protein encoded functions as a lens-specific transcription factor and plays an important role in vertebrate lens formation. Mutations in this gene are associated with anterior segment mesenchymal dysgenesis and congenital primary aphakia. [provided by RefSeq, Dec 2009],



Western Blot analysis of K562 cells using FoxE3 Polyclonal Antibody cells nucleus extracted by Minute TM Cytoplasmic and Nuclear Fractionation kit (SC-003, Invent biotech, MN, USA).



Immunohistochemical analysis of paraffin-embedded Human prostate cancer. Antibody was diluted at 1:100 (4° overnight). High-pressure and temperature Tris-EDTA, pH 8.0 was used for antigen retrieval. Negative control (right) obtained from antibody pre-abs.



Western blot analysis of lysates from K562 cells, using FOXE3 Antibody. The lane on the right is blocked with the synthesized peptide.