

ABCF1 rabbit pAb**Cat#: orb768161 (Manual)**

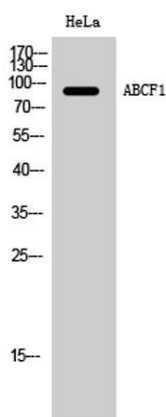
For research use only. Not intended for diagnostic use.

Product Name	ABCF1 rabbit pAb
Host species	Rabbit
Applications	WB;ELISA
Species Cross-Reactivity	Human;Mouse;Rat
Recommended dilutions	Western Blot: 1/500 - 1/2000. ELISA: 1/10000. Not yet tested in other applications.
Immunogen	Synthesized peptide derived from ABCF1 . at AA range: 760-840
Specificity	ABCF1 Polyclonal Antibody detects endogenous levels of ABCF1 protein.
Formulation	Liquid in PBS containing 50% glycerol, 0.5% BSA and 0.02% sodium azide..
Storage	Store at -20°C. Avoid repeated freeze-thaw cycles.
Protein Name	ATP-binding cassette sub-family F member 1
Gene Name	ABCF1
Cellular localization	[Isoform 2]: Cytoplasm . Nucleus, nucleoplasm . Nucleus envelope .
Purification	The antibody was affinity-purified from rabbit antiserum by affinity-chromatography using epitope-specific immunogen.
Clonality	Polyclonal

Concentration	1 mg/ml
Observed band	95kD
Human Gene ID	23
Human Swiss-Prot Number	Q8NE71
Alternative Names	ABCF1; ABC50; ATP-binding cassette sub-family F member 1; ATP-binding cassette 50; TNF-alpha-stimulated ABC protein

Background

The protein encoded by this gene is a member of the superfamily of ATP-binding cassette (ABC) transporters. ABC proteins transport various molecules across extra- and intra-cellular membranes. ABC genes are divided into seven distinct subfamilies (ABC1, MDR/TAP, MRP, ALD, OABP, GCN20, White). This protein is a member of the GCN20 subfamily. Unlike other members of the superfamily, this protein lacks the transmembrane domains which are characteristic of most ABC transporters. This protein may be regulated by tumor necrosis factor-alpha and play a role in enhancement of protein synthesis and the inflammation process. [provided by RefSeq, Jul 2008].



Western Blot analysis of HeLa cells using ABCF1 Polyclonal Antibody