

CEP152 rabbit pAb

Cat#: orb768160 (Manual)

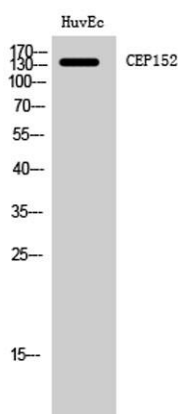
For research use only. Not intended for diagnostic use.

Product Name	CEP152 rabbit pAb
Host species	Rabbit
Applications	WB;IHC;IF;ELISA
Species Cross-Reactivity	Human;Mouse
Recommended dilutions	Western Blot: 1/500 - 1/2000. Immunohistochemistry: 1/100 - 1/300. ELISA: 1/40000. Not yet tested in other applications.
Immunogen	The antiserum was produced against synthesized peptide derived from human CEP152. AA range:841-890
Specificity	CEP152 Polyclonal Antibody detects endogenous levels of CEP152 protein.
Formulation	Liquid in PBS containing 50% glycerol, 0.5% BSA and 0.02% sodium azide..
Storage	Store at -20°C. Avoid repeated freeze-thaw cycles.
Protein Name	Centrosomal protein of 152 kDa
Gene Name	CEP152
Cellular localization	Cytoplasm, cytoskeleton, microtubule organizing center, centrosome . Cytoplasm, cytoskeleton, microtubule organizing center, centrosome, centriole . Colocalizes with CDK5RAP2, WDR62 and CEP63 in a discrete ring around the proximal end of the parental cent
Purification	The antibody was affinity-purified from rabbit antiserum by affinity-chromatography using epitope-specific immunogen.

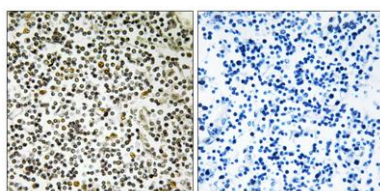
Clonality	Polyclonal
Concentration	1 mg/ml
Observed band	140kD
Human Gene ID	22995
Human Swiss-Prot Number	O94986
Alternative Names	CEP152; KIAA0912; Centrosomal protein of 152 kDa; Cep152

Background

centrosomal protein 152(CEP152) Homo sapiens This gene encodes a protein that is thought to be involved with centrosome function. Mutations in this gene have been associated with primary microcephaly (MCPH4). Alternative splicing results in multiple transcript variants. [provided by RefSeq, Aug 2010],



Western Blot analysis of HuvEc cells using CEP152 Polyclonal Antibody



Immunohistochemistry analysis of paraffin-embedded human lymph node tissue, using CEP152 Antibody. The picture on the right is blocked with the synthesized peptide.



Explore. Bioreagents.

www.biorbyt.com