

**TPX2 rabbit pAb****Cat#: orb768155 (Manual)**

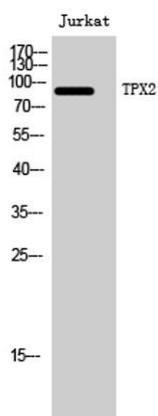
For research use only. Not intended for diagnostic use.

<b>Product Name</b>	TPX2 rabbit pAb
<b>Host species</b>	Rabbit
<b>Applications</b>	WB;IHC;IF;ELISA
<b>Species Cross-Reactivity</b>	Human;Mouse
<b>Recommended dilutions</b>	Western Blot: 1/500 - 1/2000. Immunohistochemistry: 1/100 - 1/300. ELISA: 1/10000. Not yet tested in other applications.
<b>Immunogen</b>	The antiserum was produced against synthesized peptide derived from human DIL-2. AA range:301-350
<b>Specificity</b>	TPX2 Polyclonal Antibody detects endogenous levels of TPX2 protein.
<b>Formulation</b>	Liquid in PBS containing 50% glycerol, 0.5% BSA and 0.02% sodium azide..
<b>Storage</b>	Store at -20°C. Avoid repeated freeze-thaw cycles.
<b>Protein Name</b>	Targeting protein for Xklp2
<b>Gene Name</b>	TPX2
<b>Cellular localization</b>	Nucleus . Cytoplasm, cytoskeleton, spindle . Cytoplasm, cytoskeleton, spindle pole . During mitosis it is strictly associated with the spindle pole and with the mitotic spindle, whereas during S and G2, it is diffusely distributed throughout the nucleus. Is released from the nucleus in apoptotic cells and is detected on apoptotic microtubules. .
<b>Purification</b>	The antibody was affinity-purified from rabbit antiserum by affinity-chromatography using epitope-specific immunogen.

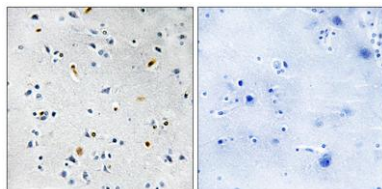
<b>Clonality</b>	Polyclonal
<b>Concentration</b>	1 mg/ml
<b>Observed band</b>	86kD
<b>Human Gene ID</b>	22974
<b>Human Swiss-Prot Number</b>	Q9ULW0
<b>Alternative Names</b>	TPX2; C20orf1; C20orf2; DIL2; HCA519; Targeting protein for Xklp2; Differentially expressed in cancerous and non-cancerous lung cells 2; DIL-2; Hepatocellular carcinoma-associated antigen 519; Protein fls353; Restricted expression prolifera

### Background

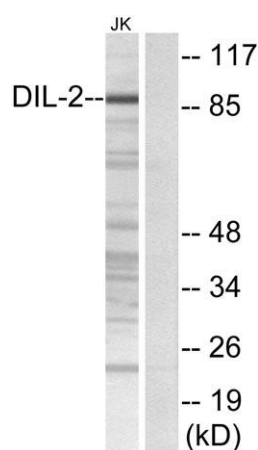
developmental stage:Exclusively expressed in proliferating cells from the transition G1/S until the end of cytokinesis.,PTM:Phosphorylated upon DNA damage, probably by ATM or ATR.,subcellular location:During mitosis it is strictly associated with the spindle pole and with the mitotic spindle, whereas during S and G2, it is diffusely distributed throughout the nucleus.,tissue specificity:Expressed in lung carcinoma cell lines but not in normal lung tissues.,



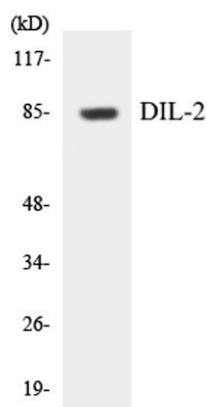
**Western Blot analysis of Jurkat cells using TPX2 Polyclonal Antibody. Secondary antibody(catalog#:RS0002) was diluted at 1:20000 cells nucleus extracted by Minute <sup>TM</sup> Cytoplasmic and Nuclear Fractionation kit (SC-003,Inventbiotech,MN,USA).**



**Immunohistochemistry analysis of paraffin-embedded human brain tissue, using DIL-2 Antibody. The picture on the right is blocked with the synthesized peptide.**



**Western blot analysis of lysates from Jurkat cells, using DIL-2 Antibody. The lane on the right is blocked with the synthesized peptide.**



**Western blot analysis of the lysates from HUVEC cells using DIL-2 antibody.**