

## ELL2 rabbit pAb

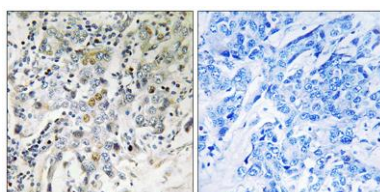
**Cat#: orb768151 (Manual)**

For research use only. Not intended for diagnostic use.

<b>Product Name</b>	ELL2 rabbit pAb
<b>Host species</b>	Rabbit
<b>Applications</b>	IHC;IF;ELISA
<b>Species Cross-Reactivity</b>	Human;Mouse
<b>Recommended dilutions</b>	Immunohistochemistry: 1/100 - 1/300. ELISA: 1/20000. Not yet tested in other applications.
<b>Immunogen</b>	The antiserum was produced against synthesized peptide derived from human ELL2. AA range:448-497
<b>Specificity</b>	ELL2 Polyclonal Antibody detects endogenous levels of ELL2 protein.
<b>Formulation</b>	Liquid in PBS containing 50% glycerol, 0.5% BSA and 0.02% sodium azide..
<b>Storage</b>	Store at -20°C. Avoid repeated freeze-thaw cycles.
<b>Protein Name</b>	RNA polymerase II elongation factor ELL2
<b>Gene Name</b>	ELL2
<b>Cellular localization</b>	Nucleus.
<b>Purification</b>	The antibody was affinity-purified from rabbit antiserum by affinity-chromatography using epitope-specific immunogen.
<b>Clonality</b>	Polyclonal

<b>Concentration</b>	1 mg/ml
<b>Observed band</b>	
<b>Human Gene ID</b>	22936
<b>Human Swiss-Prot Number</b>	O00472
<b>Alternative Names</b>	ELL2; RNA polymerase II elongation factor ELL2

**Background**      function:Elongation factor that can increase the catalytic rate of RNA polymerase II transcription by suppressing transient pausing by the polymerase at multiple sites along the DNA.,similarity:Belongs to the ELL/occludin family.,subunit:Interacts with EAF1 and EAF2.,



**Immunohistochemistry analysis of paraffin-embedded human breast carcinoma tissue, using ELL2 Antibody. The picture on the right is blocked with the synthesized peptide.**