

## Latrophilin-1 rabbit pAb

**Cat#: orb768140 (Manual)**

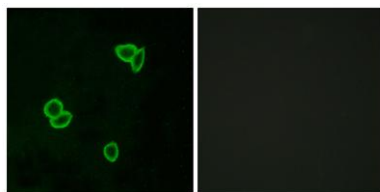
For research use only. Not intended for diagnostic use.

<b>Product Name</b>	Latrophilin-1 rabbit pAb
<b>Host species</b>	Rabbit
<b>Applications</b>	WB;ELISA;IHC
<b>Species Cross-Reactivity</b>	Human;Mouse;Rat
<b>Recommended dilutions</b>	WB 1:500-2000;IHC-p 1:50-300; ELISA 2000-20000
<b>Immunogen</b>	The antiserum was produced against synthesized peptide derived from human LPHN1. AA range:561-610
<b>Specificity</b>	Latrophilin-1 Polyclonal Antibody detects endogenous levels of Latrophilin-1 protein.
<b>Formulation</b>	Liquid in PBS containing 50% glycerol, 0.5% BSA and 0.02% sodium azide..
<b>Storage</b>	Store at -20°C. Avoid repeated freeze-thaw cycles.
<b>Protein Name</b>	Latrophilin-1
<b>Gene Name</b>	LPHN1
<b>Cellular localization</b>	Cell membrane; Multi-pass membrane protein. Cell projection, axon . Cell projection, growth cone . Cell junction, synapse . Cell junction, synapse, presynaptic cell membrane . Cell junction, synapse, synaptosome . Colocalizes with TENM2 on the cell surface
<b>Purification</b>	The antibody was affinity-purified from rabbit antiserum by affinity-chromatography using epitope-specific immunogen.

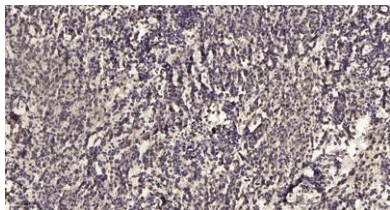
<b>Clonality</b>	Polyclonal
<b>Concentration</b>	1 mg/ml
<b>Observed band</b>	
<b>Human Gene ID</b>	22859
<b>Human Swiss-Prot Number</b>	O94910
<b>Alternative Names</b>	LPHN1; KIAA0821; LEC2; Latrophilin-1; Calcium-independent alpha-latrotoxin receptor 1; CIRL-1; Lectomedin-2

### Background

This gene encodes a member of the latrophilin subfamily of G-protein coupled receptors (GPCR). Latrophilins may function in both cell adhesion and signal transduction. In experiments with non-human species, endogenous proteolytic cleavage within a cysteine-rich GPS (G-protein-coupled-receptor proteolysis site) domain resulted in two subunits (a large extracellular N-terminal cell adhesion subunit and a subunit with substantial similarity to the secretin/calcitonin family of GPCRs) being non-covalently bound at the cell membrane. Latrophilin-1 has been shown to recruit the neurotoxin from black widow spider venom, alpha-latrotoxin, to the synapse plasma membrane. Alternative splicing results in multiple variants encoding distinct isoforms.[provided by RefSeq, Oct 2008],



**Immunofluorescence analysis of LOVO cells, using LPHN1 Antibody. The picture on the right is blocked with the synthesized peptide.**



**Immunohistochemical analysis of paraffin-embedded human meningioma. 1, Antibody was diluted at 1:200(4° overnight). 2, Tris-EDTA,pH9.0 was used for antigen retrieval. 3,Secondary antibody was diluted at 1:200(room temperature, 45min).**