

KPI-2 rabbit pAb**Cat#: orb768136 (Manual)**

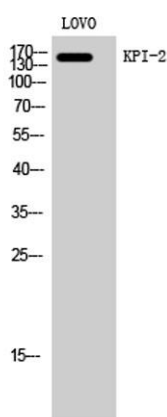
For research use only. Not intended for diagnostic use.

Product Name	KPI-2 rabbit pAb
Host species	Rabbit
Applications	WB;IHC;IF;ELISA
Species Cross-Reactivity	Human;Rat;Mouse;
Recommended dilutions	Western Blot: 1/500 - 1/2000. Immunohistochemistry: 1/100 - 1/300. Immunofluorescence: 1/200 - 1/1000. ELISA: 1/20000. Not yet tested in other applications.
Immunogen	The antiserum was produced against synthesized peptide derived from human LMTK2. AA range:651-700
Specificity	KPI-2 Polyclonal Antibody detects endogenous levels of KPI-2 protein.
Formulation	Liquid in PBS containing 50% glycerol, 0.5% BSA and 0.02% sodium azide..
Storage	Store at -20°C. Avoid repeated freeze-thaw cycles.
Protein Name	Serine/threonine-protein kinase LMTK2
Gene Name	LMTK2
Cellular localization	Membrane ; Multi-pass membrane protein .
Purification	The antibody was affinity-purified from rabbit antiserum by affinity-chromatography using epitope-specific immunogen.
Clonality	Polyclonal

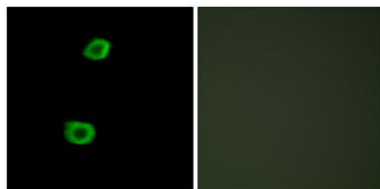
Concentration	1 mg/ml
Observed band	164kD
Human Gene ID	22853
Human Swiss-Prot Number	Q8IWU2
Alternative Names	LMTK2; AATYK2; BREK; KIAA1079; KPI2; LMR2; Serine/threonine-protein kinase LMTK2; Apoptosis-associated tyrosine kinase 2; Brain-enriched kinase; hBREK; CDK5/p35-regulated kinase; CPRK; Kinase/phosphatase/inhibitor 2; Lemur tyrosine kinase 2

Background

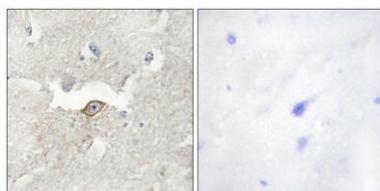
The protein encoded by this gene belongs to the protein kinase superfamily and the protein tyrosine kinase family. It contains N-terminal transmembrane helices and a long C-terminal cytoplasmic tail with serine/threonine/tyrosine kinase activity. This protein interacts with several other proteins, such as Inhibitor-2 (Inh2), protein phosphatase-1 (PP1C), p35, and myosin VI. It phosphorylates other proteins, and is itself also phosphorylated when interacting with cyclin-dependent kinase 5 (cdk5)/p35 complex. This protein involves in nerve growth factor (NGF)-TrkA signalling, and also plays a critical role in endosomal membrane trafficking. Mouse studies suggested an essential role of this protein in spermatogenesis. [provided by RefSeq, Oct 2009],



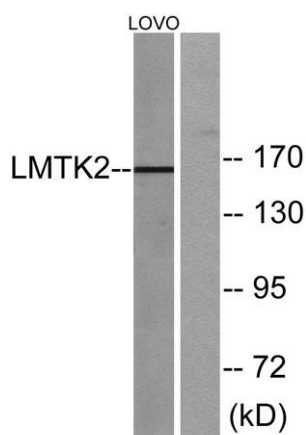
Western Blot analysis of LOVO cells using KPI-2 Polyclonal Antibody



Immunofluorescence analysis of HepG2 cells, using LMTK2 Antibody. The picture on the right is blocked with the synthesized peptide.



Immunohistochemistry analysis of paraffin-embedded human brain tissue, using LMTK2 Antibody. The picture on the right is blocked with the synthesized peptide.



Western blot analysis of lysates from LOVO cells, using LMTK2 Antibody. The lane on the right is blocked with the synthesized peptide.