

**RHOBTB3 rabbit pAb****Cat#: orb768133 (Manual)**

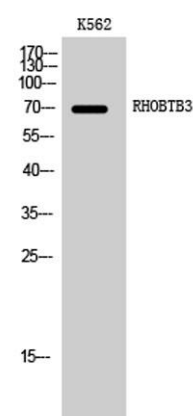
For research use only. Not intended for diagnostic use.

<b>Product Name</b>	RHOBTB3 rabbit pAb
<b>Host species</b>	Rabbit
<b>Applications</b>	WB;IHC;IF;ELISA
<b>Species Cross-Reactivity</b>	Human;Mouse
<b>Recommended dilutions</b>	Western Blot: 1/500 - 1/2000.IHC-p:1:50-300 ELISA: 1/20000. Not yet tested in other applications.
<b>Immunogen</b>	The antiserum was produced against synthesized peptide derived from human RHOBTB3. AA range:335-384
<b>Specificity</b>	RHOBTB3 Polyclonal Antibody detects endogenous levels of RHOBTB3 protein.
<b>Formulation</b>	Liquid in PBS containing 50% glycerol, 0.5% BSA and 0.02% sodium azide..
<b>Storage</b>	Store at -20°C. Avoid repeated freeze-thaw cycles.
<b>Protein Name</b>	Rho-related BTB domain-containing protein 3
<b>Gene Name</b>	RHOBTB3
<b>Cellular localization</b>	Golgi apparatus .
<b>Purification</b>	The antibody was affinity-purified from rabbit antiserum by affinity-chromatography using epitope-specific immunogen.
<b>Clonality</b>	Polyclonal

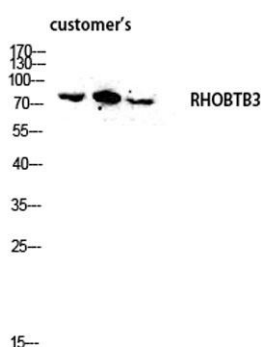
<b>Concentration</b>	1 mg/ml
<b>Observed band</b>	70kD
<b>Human Gene ID</b>	22836
<b>Human Swiss-Prot Number</b>	O94955
<b>Alternative Names</b>	RHOBTB3; KIAA0878; Rho-related BTB domain-containing protein 3

### Background

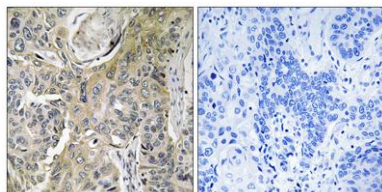
RHOBTB3 is a member of the evolutionarily conserved RHOBTB subfamily of Rho GTPases. For background information on RHOBTBs, see RHOBTB1 (MIM 607351).[supplied by OMIM, Apr 2004].



**Western Blot analysis of K562 cells using RHOBTB3 Polyclonal Antibody diluted at 1:2000**



**Western blot analysis of customer's lysis using RHOBTB3 antibody. Antibody was diluted at 1:2000**



**Immunohistochemistry analysis of paraffin-embedded human lung carcinoma tissue, using RHOBTB3 Antibody. The picture on the right is blocked with the synthesized peptide.**