

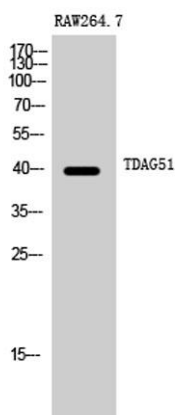
TDAG51 rabbit pAb**Cat#: orb768131 (Manual)**

For research use only. Not intended for diagnostic use.

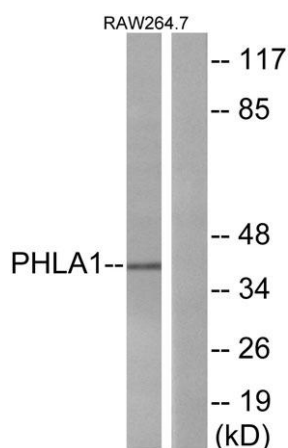
Product Name	TDAG51 rabbit pAb
Host species	Rabbit
Applications	WB;ELISA
Species Cross-Reactivity	Human;Mouse;Rat
Recommended dilutions	Western Blot: 1/500 - 1/2000. ELISA: 1/10000. Not yet tested in other applications.
Immunogen	The antiserum was produced against synthesized peptide derived from human PHLA1. AA range:271-320
Specificity	TDAG51 Polyclonal Antibody detects endogenous levels of TDAG51 protein.
Formulation	Liquid in PBS containing 50% glycerol, 0.5% BSA and 0.02% sodium azide..
Storage	Store at -20°C. Avoid repeated freeze-thaw cycles.
Protein Name	Pleckstrin homology-like domain family A member 1
Gene Name	PHLDA1
Cellular localization	Cytoplasm . Cytoplasmic vesicle . Nucleus, nucleolus . Colocalizes with intracellular vesicles. .
Purification	The antibody was affinity-purified from rabbit antiserum by affinity-chromatography using epitope-specific immunogen.
Clonality	Polyclonal

Concentration	1 mg/ml
Observed band	40kD
Human Gene ID	22822
Human Swiss-Prot Number	Q8WV24
Alternative Names	PHLDA1; PHRIP; TDAG51; Pleckstrin homology-like domain family A member 1; Apoptosis-associated nuclear protein; Proline- and glutamine-rich protein; PQ-rich protein; PQR protein; Proline- and histidine-rich protein; T-cell death-associated

Background This gene encodes an evolutionarily conserved proline-histidine rich nuclear protein. The encoded protein may play an important role in the anti-apoptotic effects of insulin-like growth factor-1. [provided by RefSeq, Jul 2008],



Western Blot analysis of RAW264.7 cells using TDAG51 Polyclonal Antibody



Western blot analysis of lysates from RAW264.7 cells, using PHLA1 Antibody. The lane on the right is blocked with the synthesized peptide.