

Glypican-5 rabbit pAb

Cat#: orb768125 (Manual)

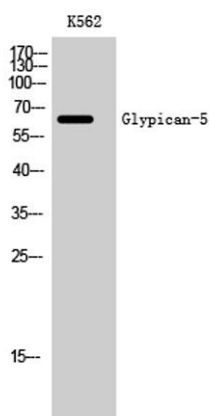
For research use only. Not intended for diagnostic use.

Product Name	Glypican-5 rabbit pAb
Host species	Rabbit
Applications	WB;ELISA
Species Cross-Reactivity	Human;Mouse;Rat
Recommended dilutions	Western Blot: 1/500 - 1/2000. ELISA: 1/40000. Not yet tested in other applications.
Immunogen	Synthesized peptide derived from the Internal region of human Glypican-5.
Specificity	Glypican-5 Polyclonal Antibody detects endogenous levels of Glypican-5 protein.
Formulation	Liquid in PBS containing 50% glycerol, 0.5% BSA and 0.02% sodium azide..
Storage	Store at -20°C. Avoid repeated freeze-thaw cycles.
Protein Name	Glypican-5
Gene Name	GPC5
Cellular localization	Cell membrane ; Lipid-anchor, GPI-anchor ; Extracellular side .; [Secreted glypican-5]: Secreted, extracellular space .
Purification	The antibody was affinity-purified from rabbit antiserum by affinity-chromatography using epitope-specific immunogen.
Clonality	Polyclonal

Concentration	1 mg/ml
Observed band	65kD
Human Gene ID	2262
Human Swiss-Prot Number	P78333
Alternative Names	GPC5; Glypican-5

Background

Cell surface heparan sulfate proteoglycans are composed of a membrane-associated protein core substituted with a variable number of heparan sulfate chains. Members of the glypican-related integral membrane proteoglycan family (GRIPS) contain a core protein anchored to the cytoplasmic membrane via a glycosyl phosphatidylinositol linkage. These proteins may play a role in the control of cell division and growth regulation. [provided by RefSeq, Jul 2008],



Western Blot analysis of K562 cells using Glypican-5 Polyclonal Antibody