

GPRC6A rabbit pAb

Cat#: orb768111 (Manual)

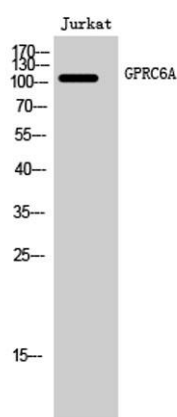
For research use only. Not intended for diagnostic use.

Product Name	GPRC6A rabbit pAb
Host species	Rabbit
Applications	WB;IF;ELISA
Species Cross-Reactivity	Human;Rat;Mouse;
Recommended dilutions	Western Blot: 1/500 - 1/2000. Immunofluorescence: 1/200 - 1/1000. ELISA: 1/5000. Not yet tested in other applications.
Immunogen	The antiserum was produced against synthesized peptide derived from human GPRC6A. AA range:471-520
Specificity	GPRC6A Polyclonal Antibody detects endogenous levels of GPRC6A protein.
Formulation	Liquid in PBS containing 50% glycerol, 0.5% BSA and 0.02% sodium azide..
Storage	Store at -20°C. Avoid repeated freeze-thaw cycles.
Protein Name	G-protein coupled receptor family C group 6 member A
Gene Name	GPRC6A
Cellular localization	Cell membrane ; Multi-pass membrane protein .
Purification	The antibody was affinity-purified from rabbit antiserum by affinity-chromatography using epitope-specific immunogen.
Clonality	Polyclonal

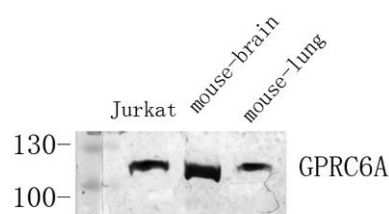
Concentration	1 mg/ml
Observed band	105kD
Human Gene ID	222545
Human Swiss-Prot Number	Q5T6X5
Alternative Names	GPRC6A; G-protein coupled receptor family C group 6 member A; hGPRC6A; G-protein coupled receptor GPCR33; hGPCR33

Background

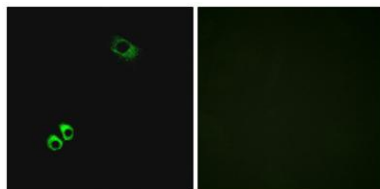
Members of family C of the G protein-coupled receptor (GPCR) superfamily, such as GPRC6A, are characterized by an evolutionarily conserved amino acid-sensing motif linked to an intramembranous 7-transmembrane loop region. Several members of GPCR family C, including GPRC6A, also have a long N-terminal domain (summary by Pi et al., 2005 [PubMed 16199532]).[supplied by OMIM, Nov 2010],



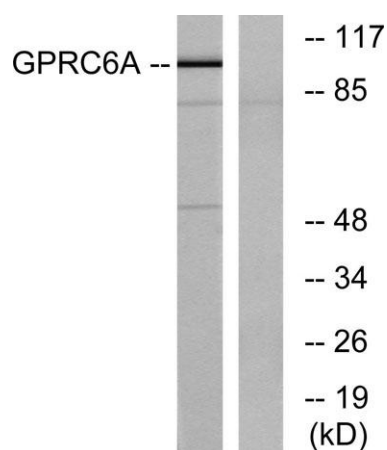
Western Blot analysis of Jurkat cells using GPRC6A Polyclonal Antibody diluted at 1:1000



Western Blot analysis of various cells using Antibody diluted at 1:1000. Secondary antibody(catalog#:RS0002) was diluted at 1:20000



Immunofluorescence analysis of MCF7 cells, using GPRC6A Antibody. The picture on the right is blocked with the synthesized peptide.



Western blot analysis of lysates from Jurkat cells, using GPRC6A Antibody. The lane on the right is blocked with the synthesized peptide.