

## Neuropsin rabbit pAb

**Cat#: orb768104 (Manual)**

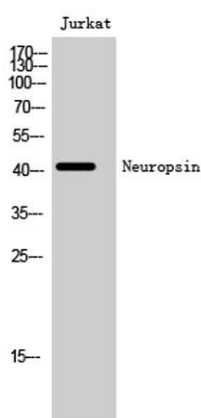
For research use only. Not intended for diagnostic use.

<b>Product Name</b>	Neuropsin rabbit pAb
<b>Host species</b>	Rabbit
<b>Applications</b>	WB;ELISA;IHC
<b>Species Cross-Reactivity</b>	Human;Mouse
<b>Recommended dilutions</b>	WB 1:500-2000;IHC-p 1:50-300; ELISA 2000-20000
<b>Immunogen</b>	The antiserum was produced against synthesized peptide derived from human OPN5. AA range:251-300
<b>Specificity</b>	Neuropsin Polyclonal Antibody detects endogenous levels of Neuropsin protein.
<b>Formulation</b>	Liquid in PBS containing 50% glycerol, 0.5% BSA and 0.02% sodium azide..
<b>Storage</b>	Store at -20°C. Avoid repeated freeze-thaw cycles.
<b>Protein Name</b>	Opsin-5
<b>Gene Name</b>	OPN5
<b>Cellular localization</b>	Cell membrane ; Multi-pass membrane protein .
<b>Purification</b>	The antibody was affinity-purified from rabbit antiserum by affinity-chromatography using epitope-specific immunogen.
<b>Clonality</b>	Polyclonal

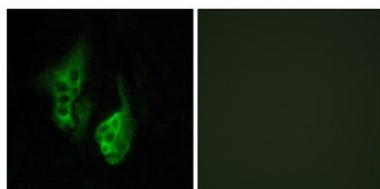
<b>Concentration</b>	1 mg/ml
<b>Observed band</b>	43kD
<b>Human Gene ID</b>	221391
<b>Human Swiss-Prot Number</b>	Q6U736
<b>Alternative Names</b>	OPN5; GPR136; PGR12; TMEM13; Opsin-5; G-protein coupled receptor 136; G-protein coupled receptor PGR12; Neuropsin; Transmembrane protein 13

### Background

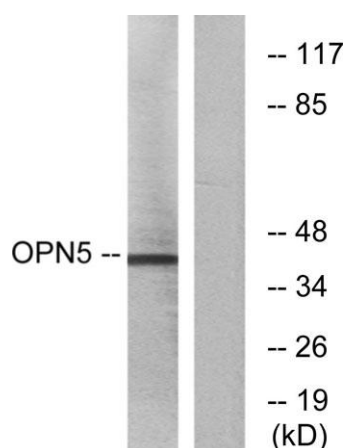
Opsins are members of the guanine nucleotide-binding protein (G protein)-coupled receptor superfamily. This opsin gene is expressed in the eye, brain, testes, and spinal cord. This gene belongs to the seven-exon subfamily of mammalian opsin genes that includes peropsin (RRH) and retinal G protein coupled receptor (RGR). Like these other seven-exon opsin genes, this family member may encode a protein with photoisomerase activity. Alternative splicing results in multiple transcript variants. [provided by RefSeq, Jun 2010].



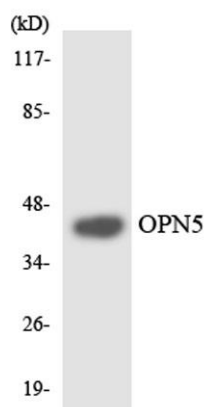
**Western Blot analysis of Jurkat cells using Neuropsin Polyclonal Antibody**



**Immunofluorescence analysis of HeLa cells, using OPN5 Antibody. The picture on the right is blocked with the synthesized peptide.**



Western blot analysis of lysates from Jurkat cells, using OPN5 Antibody. The lane on the right is blocked with the synthesized peptide.



Western blot analysis of the lysates from HUVEC cells using OPN5 antibody.