

IF3 rabbit pAb

Cat#: orb768080 (Manual)

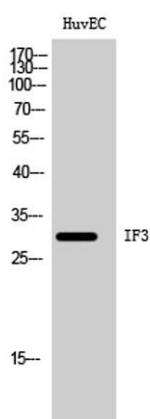
For research use only. Not intended for diagnostic use.

Product Name	IF3 rabbit pAb
Host species	Rabbit
Applications	WB;IHC;IF;ELISA
Species Cross-Reactivity	Human;Rat;Mouse;
Recommended dilutions	Western Blot: 1/500 - 1/2000. Immunohistochemistry: 1/100 - 1/300. ELISA: 1/40000. Not yet tested in other applications.
Immunogen	The antiserum was produced against synthesized peptide derived from human MTIF3. AA range:69-118
Specificity	IF3 Polyclonal Antibody detects endogenous levels of IF3 protein.
Formulation	Liquid in PBS containing 50% glycerol, 0.5% BSA and 0.02% sodium azide..
Storage	Store at -20°C. Avoid repeated freeze-thaw cycles.
Protein Name	Translation initiation factor IF-3 mitochondrial
Gene Name	MTIF3
Cellular localization	Mitochondrion .
Purification	The antibody was affinity-purified from rabbit antiserum by affinity-chromatography using epitope-specific immunogen.
Clonality	Polyclonal

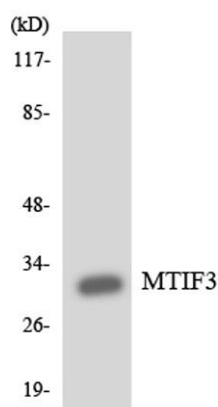
Concentration	1 mg/ml
Observed band	30kD
Human Gene ID	219402
Human Swiss-Prot Number	Q9H2K0
Alternative Names	MTIF3; DC38; Translation initiation factor IF-3; mitochondrial; IF-3(Mt); IF-3Mt; IF3(mt); IF3mt

Background

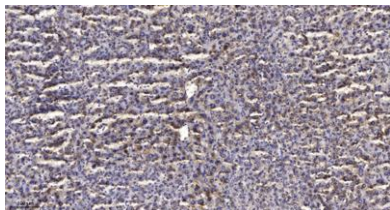
This gene encodes a translation initiation factor that is involved in mitochondrial protein synthesis. Polymorphism in this gene is associated with the onset of Parkinson's disease. Alternate splicing results in multiple transcript variants. A pseudogene of this gene is found on chromosome 5. [provided by RefSeq, Oct 2009],



Western Blot analysis of HuvEC cells using IF3 Polyclonal Antibody diluted at 1:500



Western blot analysis of the lysates from HUVEC cells using MTIF3 antibody.



Immunohistochemical analysis of paraffin-embedded human liver cancer. 1, Antibody was diluted at 1:200(4° overnight). 2, Tris-EDTA,pH9.0 was used for antigen retrieval. 3,Secondary antibody was diluted at 1:200(room temperature, 45min).