

## 4.1R rabbit pAb

**Cat#: orb767998 (Manual)**

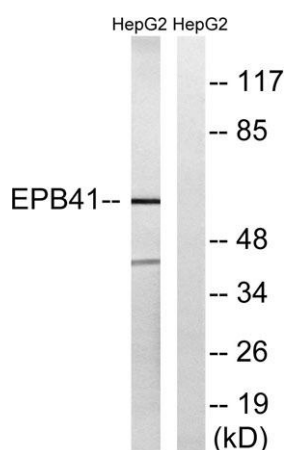
For research use only. Not intended for diagnostic use.

<b>Product Name</b>	4.1R rabbit pAb
<b>Host species</b>	Rabbit
<b>Applications</b>	WB;ELISA
<b>Species Cross-Reactivity</b>	Human;Mouse
<b>Recommended dilutions</b>	Western Blot: 1/500 - 1/2000. ELISA: 1/5000. Not yet tested in other applications.
<b>Immunogen</b>	The antiserum was produced against synthesized peptide derived from human EPB41. AA range:626-675
<b>Specificity</b>	4.1R Polyclonal Antibody detects endogenous levels of 4.1R protein.
<b>Formulation</b>	Liquid in PBS containing 50% glycerol, 0.5% BSA and 0.02% sodium azide..
<b>Storage</b>	Store at -20°C. Avoid repeated freeze-thaw cycles.
<b>Protein Name</b>	Protein 4.1
<b>Gene Name</b>	EPB41
<b>Cellular localization</b>	Cytoplasm, cytoskeleton . Cytoplasm, cell cortex . Nucleus .
<b>Purification</b>	The antibody was affinity-purified from rabbit antiserum by affinity-chromatography using epitope-specific immunogen.
<b>Clonality</b>	Polyclonal

<b>Concentration</b>	1 mg/ml
<b>Observed band</b>	60kD
<b>Human Gene ID</b>	2035
<b>Human Swiss-Prot Number</b>	P11171
<b>Alternative Names</b>	EPB41; E41P; Protein 4.1; P4.1; 4.1R; Band 4.1; EPB4.1

### Background

The protein encoded by this gene, together with spectrin and actin, constitute the red cell membrane cytoskeletal network. This complex plays a critical role in erythrocyte shape and deformability. Mutations in this gene are associated with type 1 elliptocytosis (EL1). Alternatively spliced transcript variants encoding different isoforms have been described for this gene.[provided by RefSeq, Oct 2009],



**Western blot analysis of lysates from HepG2 cells treated with PMA 125ng/ml 30', using EPB41 Antibody. The lane on the right is blocked with the synthesized peptide.**