

**MCT13 rabbit pAb****Cat#: orb767986 (Manual)**

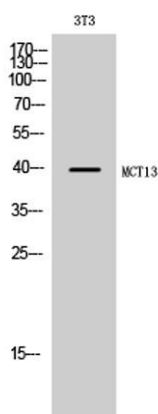
For research use only. Not intended for diagnostic use.

<b>Product Name</b>	MCT13 rabbit pAb
<b>Host species</b>	Rabbit
<b>Applications</b>	WB;ELISA
<b>Species Cross-Reactivity</b>	Human;Rat;Mouse;
<b>Recommended dilutions</b>	Western Blot: 1/500 - 1/2000. ELISA: 1/5000. Not yet tested in other applications.
<b>Immunogen</b>	The antiserum was produced against synthesized peptide derived from human MOT13. AA range:377-426
<b>Specificity</b>	MCT13 Polyclonal Antibody detects endogenous levels of MCT13 protein.
<b>Formulation</b>	Liquid in PBS containing 50% glycerol, 0.5% BSA and 0.02% sodium azide..
<b>Storage</b>	Store at -20°C. Avoid repeated freeze-thaw cycles.
<b>Protein Name</b>	Monocarboxylate transporter 13
<b>Gene Name</b>	SLC16A13
<b>Cellular localization</b>	Golgi apparatus membrane ; Multi-pass membrane protein . Cell membrane ; Multi-pass membrane protein .
<b>Purification</b>	The antibody was affinity-purified from rabbit antiserum by affinity-chromatography using epitope-specific immunogen.
<b>Clonality</b>	Polyclonal

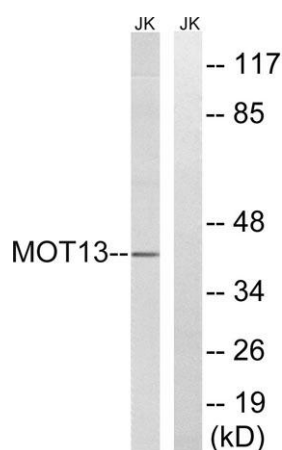
<b>Concentration</b>	1 mg/ml
<b>Observed band</b>	40kD
<b>Human Gene ID</b>	201232
<b>Human Swiss-Prot Number</b>	Q7RTY0
<b>Alternative Names</b>	SLC16A13; MCT13; Monocarboxylate transporter 13; MCT 13; Solute carrier family 16 member 13

### Background

function: Proton-linked monocarboxylate transporter. Catalyzes the rapid transport across the plasma membrane of many monocarboxylates., similarity: Belongs to the major facilitator superfamily. Monocarboxylate porter (TC 2.A.1.13) family.,



**Western Blot analysis of 3T3 cells using MCT13 Polyclonal Antibody**



**Western blot analysis of lysates from Jurkat cells, using MOT13 Antibody. The lane on the right is blocked with the synthesized peptide.**