

## APLF rabbit pAb

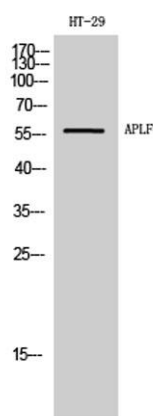
**Cat#: orb767979 (Manual)**

For research use only. Not intended for diagnostic use.

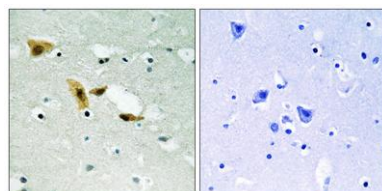
<b>Product Name</b>	APLF rabbit pAb
<b>Host species</b>	Rabbit
<b>Applications</b>	WB;IHC;IF;ELISA
<b>Species Cross-Reactivity</b>	Human;Mouse
<b>Recommended dilutions</b>	Western Blot: 1/500 - 1/2000. Immunohistochemistry: 1/100 - 1/300. ELISA: 1/40000. Not yet tested in other applications.
<b>Immunogen</b>	The antiserum was produced against synthesized peptide derived from human APLF. AA range:82-131
<b>Specificity</b>	APLF Polyclonal Antibody detects endogenous levels of APLF protein.
<b>Formulation</b>	Liquid in PBS containing 50% glycerol, 0.5% BSA and 0.02% sodium azide..
<b>Storage</b>	Store at -20°C. Avoid repeated freeze-thaw cycles.
<b>Protein Name</b>	Aprataxin and PNK-like factor
<b>Gene Name</b>	APLF
<b>Cellular localization</b>	Nucleus . Chromosome . Cytoplasm, cytosol . Localizes to DNA damage sites (PubMed:18474613, PubMed:18172500, PubMed:21211721, PubMed:23689425). Accumulates at single-strand breaks and double-strand breaks via the PBZ-type zinc fingers (PubMed:18172500). .
<b>Purification</b>	The antibody was affinity-purified from rabbit antiserum by affinity-chromatography using epitope-specific immunogen.

<b>Clonality</b>	Polyclonal
<b>Concentration</b>	1 mg/ml
<b>Observed band</b>	57kD
<b>Human Gene ID</b>	200558
<b>Human Swiss-Prot Number</b>	Q8IW19
<b>Alternative Names</b>	APLF; C2orf13; PALF; XIP1; Aprataxin and PNK-like factor; Apurinic-apyrimidinic endonuclease APLF; PNK and APTX-like FHA domain-containing protein; XRCC1-interacting protein 1

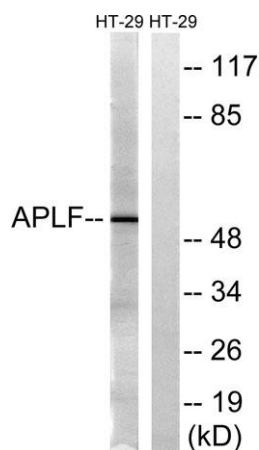
**Background** C2ORF13 is a component of the cellular response to chromosomal DNA single- and double-strand breaks (Iles et al., 2007 [PubMed 17353262]).[supplied by OMIM, Mar 2008],



**Western Blot analysis of HT-29 cells using APLF Polyclonal Antibody**



**Immunohistochemistry analysis of paraffin-embedded human brain tissue, using APLF Antibody. The picture on the right is blocked with the synthesized peptide.**



**Western blot analysis of lysates from HT-29 cells, using APLF Antibody. The lane on the right is blocked with the synthesized peptide.**