

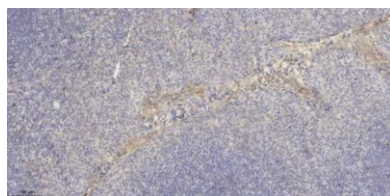
## Macroglobulin $\alpha$ -2 rabbit pAb

**Cat#: orb767966 (Manual)**

For research use only. Not intended for diagnostic use.

<b>Product Name</b>	Macroglobulin $\alpha$ -2 rabbit pAb
<b>Host species</b>	Rabbit
<b>Applications</b>	IHC;IF;ELISA
<b>Species Cross-Reactivity</b>	Human;Rat;Mouse;
<b>Recommended dilutions</b>	Immunohistochemistry: 1/100 - 1/300. ELISA: 1/40000. Not yet tested in other applications.
<b>Immunogen</b>	Synthesized peptide derived from Macroglobulin $\alpha$ -2 . at AA range: 1100-1180
<b>Specificity</b>	Macroglobulin $\alpha$ -2 Polyclonal Antibody detects endogenous levels of Macroglobulin $\alpha$ -2 protein.
<b>Formulation</b>	Liquid in PBS containing 50% glycerol, 0.5% BSA and 0.02% sodium azide..
<b>Storage</b>	Store at -20°C. Avoid repeated freeze-thaw cycles.
<b>Protein Name</b>	Alpha-2-macroglobulin
<b>Gene Name</b>	A2M
<b>Cellular localization</b>	Secreted .
<b>Purification</b>	The antibody was affinity-purified from rabbit antiserum by affinity-chromatography using epitope-specific immunogen.
<b>Clonality</b>	Polyclonal

<b>Concentration</b>	1 mg/ml
<b>Observed band</b>	
<b>Human Gene ID</b>	2
<b>Human Swiss-Prot Number</b>	P01023
<b>Alternative Names</b>	A2M; CPAMD5; FWP007; Alpha-2-macroglobulin; Alpha-2-M; C3 and PZP-like alpha-2-macroglobulin domain-containing protein 5
<b>Background</b>	Alpha-2-macroglobulin is a protease inhibitor and cytokine transporter. It inhibits many proteases, including trypsin, thrombin and collagenase. A2M is implicated in Alzheimer disease (AD) due to its ability to mediate the clearance and degradation of A-beta, the major component of beta-amyloid deposits. [provided by RefSeq, Jul 2008],



**Immunohistochemical analysis of paraffin-embedded human tonsil. 1, Antibody was diluted at 1:200(4° overnight). 2, Tris-EDTA,pH9.0 was used for antigen retrieval. 3,Secondary antibody was diluted at 1:200(room temperature, 30min).**