

eIF4B rabbit pAb**Cat#: orb767950 (Manual)**

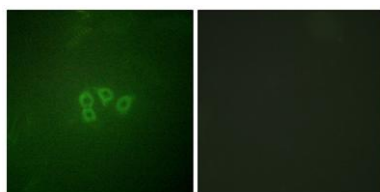
For research use only. Not intended for diagnostic use.

Product Name	eIF4B rabbit pAb
Host species	Rabbit
Applications	WB;IHC;IF;ELISA
Species Cross-Reactivity	Human;Mouse
Recommended dilutions	Western Blot: 1/500 - 1/2000. Immunohistochemistry: 1/100 - 1/300. Immunofluorescence: 1/200 - 1/1000. ELISA: 1/5000. Not yet tested in other applications.
Immunogen	The antiserum was produced against synthesized peptide derived from human eIF4B. AA range:388-437
Specificity	eIF4B Polyclonal Antibody detects endogenous levels of eIF4B protein.
Formulation	Liquid in PBS containing 50% glycerol, 0.5% BSA and 0.02% sodium azide..
Storage	Store at -20°C. Avoid repeated freeze-thaw cycles.
Protein Name	Eukaryotic translation initiation factor 4B
Gene Name	EIF4B
Cellular localization	cytosol,polysome,eukaryotic translation initiation factor 4F complex,dendrite,neuronal cell body,
Purification	The antibody was affinity-purified from rabbit antiserum by affinity-chromatography using epitope-specific immunogen.
Clonality	Polyclonal

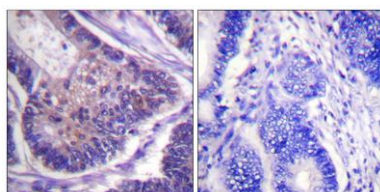
Concentration	1 mg/ml
Observed band	70kD
Human Gene ID	1975
Human Swiss-Prot Number	P23588
Alternative Names	EIF4B; Eukaryotic translation initiation factor 4B; eIF-4B

Background

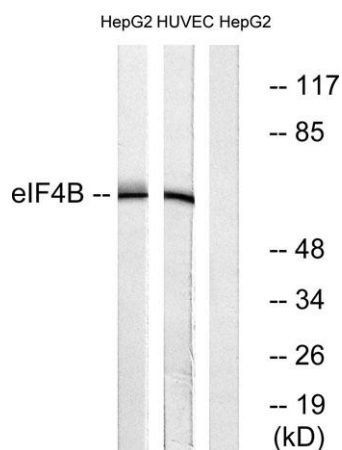
function: Required for the binding of mRNA to ribosomes. Functions in close association with EIF4-F and EIF4-A. Binds near the 5'-terminal cap of mRNA in presence of EIF-4F and ATP. Promotes the ATPase activity and the ATP-dependent RNA unwinding activity of both EIF4-A and EIF4-F. **similarity:** Contains 1 RRM (RNA recognition motif) domain. **subunit:** Self-associates and interacts with EIF3 p170 subunit.



Immunofluorescence analysis of A549 cells, using eIF4B Antibody. The picture on the right is blocked with the synthesized peptide.



Immunohistochemistry analysis of paraffin-embedded human colon carcinoma tissue, using eIF4B Antibody. The picture on the right is blocked with the synthesized peptide.



Western blot analysis of lysates from HepG2 and HUVEC cells, using eIF4B Antibody. The lane on the right is blocked with the synthesized peptide.