

**Dsg1 rabbit pAb****Cat#: orb767902 (Manual)**

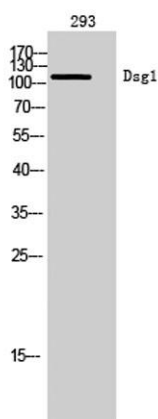
For research use only. Not intended for diagnostic use.

<b>Product Name</b>	Dsg1 rabbit pAb
<b>Host species</b>	Rabbit
<b>Applications</b>	WB;ELISA
<b>Species Cross-Reactivity</b>	Human;Mouse
<b>Recommended dilutions</b>	Western Blot: 1/500 - 1/2000. ELISA: 1/40000. Not yet tested in other applications.
<b>Immunogen</b>	The antiserum was produced against synthesized peptide derived from human DSG1. AA range:161-210
<b>Specificity</b>	Dsg1 Polyclonal Antibody detects endogenous levels of Dsg1 protein.
<b>Formulation</b>	Liquid in PBS containing 50% glycerol, 0.5% BSA and 0.02% sodium azide..
<b>Storage</b>	Store at -20°C. Avoid repeated freeze-thaw cycles.
<b>Protein Name</b>	Desmoglein-1
<b>Gene Name</b>	DSG1
<b>Cellular localization</b>	Cell membrane ; Single-pass type I membrane protein . Cell junction, desmosome.
<b>Purification</b>	The antibody was affinity-purified from rabbit antiserum by affinity-chromatography using       epitope-specific immunogen.
<b>Clonality</b>	Polyclonal

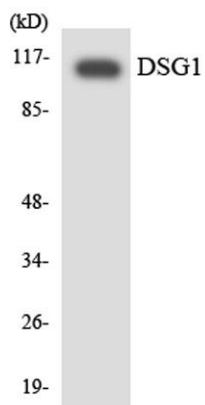
<b>Concentration</b>	1 mg/ml
<b>Observed band</b>	114kD
<b>Human Gene ID</b>	1828
<b>Human Swiss-Prot Number</b>	Q02413
<b>Alternative Names</b>	DSG1; CDHF4; Desmoglein-1; Cadherin family member 4; Desmosomal glycoprotein 1; DGI; DGI; Pemphigus foliaceus antigen

### Background

This gene encodes a member of the desmoglein protein subfamily. Desmogleins, along with desmocollins, are cadherin-like transmembrane glycoproteins that are major components of the desmosome. Desmosomes are cell-cell junctions that help resist shearing forces and are found in high concentrations in cells subject to mechanical stress. This gene is found in a cluster with other desmoglein family members on chromosome 18. The encoded protein has been identified as a target of auto-antibodies in the autoimmune skin blistering disease pemphigus foliaceus. Disruption of this gene has also been associated with the skin diseases palmoplantar keratoderma and erythroderma. [provided by RefSeq, Feb 2015],



**Western Blot analysis of 293 cells using Dsg1 Polyclonal Antibody**



Western blot analysis of the lysates from 293 cells using DSG1 antibody.