

PSD-93 rabbit pAb**Cat#: orb767882 (Manual)**

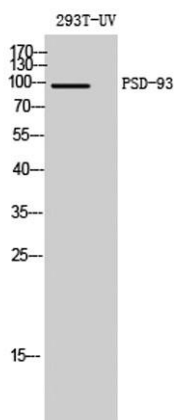
For research use only. Not intended for diagnostic use.

| | |
|---------------------------------|--|
| Product Name | PSD-93 rabbit pAb |
| Host species | Rabbit |
| Applications | WB;IHC;IF;ELISA |
| Species Cross-Reactivity | Human;Rat;Mouse; |
| Recommended dilutions | Western Blot: 1/500 - 1/2000. Immunohistochemistry: 1/100 - 1/300. ELISA: 1/40000. Not yet tested in other applications. |
| Immunogen | The antiserum was produced against synthesized peptide derived from human DLG2. AA range:601-650 |
| Specificity | PSD-93 Polyclonal Antibody detects endogenous levels of PSD-93 protein. |
| Formulation | Liquid in PBS containing 50% glycerol, 0.5% BSA and 0.02% sodium azide.. |
| Storage | Store at -20°C. Avoid repeated freeze-thaw cycles. |
| Protein Name | Disks large homolog 2 |
| Gene Name | DLG2 |
| Cellular localization | Cell membrane ; Lipid-anchor . Cell junction, synapse, postsynaptic density . Cell junction, synapse . Membrane . Cell projection, axon . Perikaryon . Concentrated in soma and postsynaptic density of a subset of neurons. . |
| Purification | The antibody was affinity-purified from rabbit antiserum by affinity-chromatography using epitope-specific immunogen. |

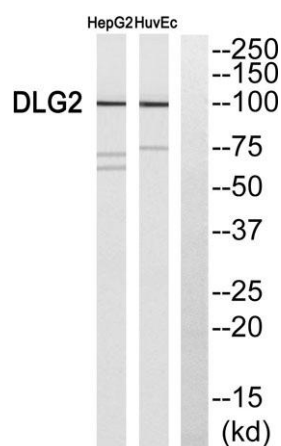
| | |
|--------------------------------|--|
| Clonality | Polyclonal |
| Concentration | 1 mg/ml |
| Observed band | 97kD |
| Human Gene ID | 1740 |
| Human Swiss-Prot Number | Q15700 |
| Alternative Names | DLG2; Disks large homolog 2; Channel-associated protein of synapse-110; Chapsyn-110; Postsynaptic density protein PSD-93 |

Background

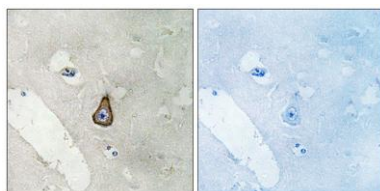
This gene encodes a member of the membrane-associated guanylate kinase (MAGUK) family. The encoded protein forms a heterodimer with a related family member that may interact at postsynaptic sites to form a multimeric scaffold for the clustering of receptors, ion channels, and associated signaling proteins. Multiple transcript variants encoding different isoforms have been found for this gene. Additional transcript variants have been described, but their full-length nature is not known. [provided by RefSeq, Dec 2008],



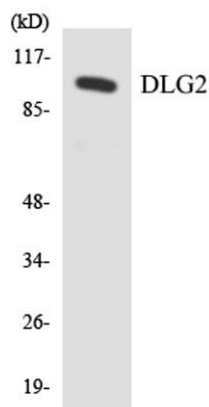
Western Blot analysis of 293T-UV cells using PSD-93 Polyclonal Antibody diluted at 1:1000



Western blot analysis of DLG2 Antibody. The lane on the right is blocked with the DLG2 peptide.



Immunohistochemistry analysis of paraffin-embedded human brain, using DLG2 Antibody. The lane on the right is blocked with the DLG2 peptide.



Western blot analysis of the lysates from HeLa cells using DLG2 antibody.