

ADAMTS-17 rabbit pAb**Cat#: orb767876 (Manual)**

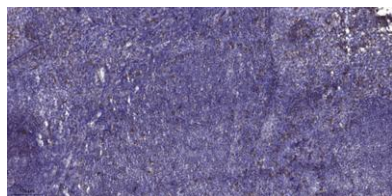
For research use only. Not intended for diagnostic use.

Product Name	ADAMTS-17 rabbit pAb
Host species	Rabbit
Applications	IHC;IF;ELISA
Species Cross-Reactivity	Human;Mouse
Recommended dilutions	Immunohistochemistry: 1/100 - 1/300. ELISA: 1/20000. Not yet tested in other applications.
Immunogen	Synthesized peptide derived from ADAMTS-17 . at AA range: 150-230
Specificity	ADAMTS-17 Polyclonal Antibody detects endogenous levels of ADAMTS-17 protein.
Formulation	Liquid in PBS containing 50% glycerol, 0.5% BSA and 0.02% sodium azide..
Storage	Store at -20°C. Avoid repeated freeze-thaw cycles.
Protein Name	A disintegrin and metalloproteinase with thrombospondin motifs 17
Gene Name	ADAMTS17
Cellular localization	Secreted, extracellular space, extracellular matrix .
Purification	The antibody was affinity-purified from rabbit antiserum by affinity-chromatography using epitope-specific immunogen.
Clonality	Polyclonal

Concentration	1 mg/ml
Observed band	
Human Gene ID	170691
Human Swiss-Prot Number	Q8TE56
Alternative Names	ADAMTS17; A disintegrin and metalloproteinase with thrombospondin motifs 17; ADAM-TS 17; ADAM-TS17; ADAMTS-17

Background

This gene encodes a member of the ADAMTS (a disintegrin and metalloproteinase with thrombospondin motifs) protein family. ADAMTS family members share several distinct protein modules, including a propeptide region, a metalloproteinase domain, a disintegrin-like domain, and a thrombospondin type 1 (TS) motif. Individual members of this family differ in the number of C-terminal TS motifs, and some have unique C-terminal domains. The encoded preproprotein is proteolytically processed to generate the mature protein, which may promote breast cancer cell growth and survival. Mutations in this gene are associated with a Weill-Marchesani-like syndrome, which is characterized by lenticular myopia, ectopia lentis, glaucoma, spherophakia, and short stature. [provided by RefSeq, May 2016],



Immunohistochemical analysis of paraffin-embedded human tonsil. 1, Antibody was diluted at 1:200(4° overnight). 2, Tris-EDTA,pH9.0 was used for antigen retrieval. 3,Secondary antibody was diluted at 1:200(room temperature, 30min).