

S-100Z rabbit pAb**Cat#: orb767874 (Manual)**

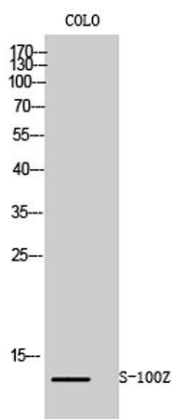
For research use only. Not intended for diagnostic use.

Product Name	S-100Z rabbit pAb
Host species	Rabbit
Applications	WB;IHC;IF;ELISA
Species Cross-Reactivity	Human;Rat;Mouse;
Recommended dilutions	Western Blot: 1/500 - 1/2000. Immunohistochemistry: 1/100 - 1/300. ELISA: 1/20000. Not yet tested in other applications.
Immunogen	The antiserum was produced against synthesized peptide derived from human S100Z. AA range:2-51
Specificity	S-100Z Polyclonal Antibody detects endogenous levels of S-100Z protein.
Formulation	Liquid in PBS containing 50% glycerol, 0.5% BSA and 0.02% sodium azide..
Storage	Store at -20°C. Avoid repeated freeze-thaw cycles.
Protein Name	Protein S100-Z
Gene Name	S100Z
Cellular localization	
Purification	The antibody was affinity-purified from rabbit antiserum by affinity-chromatography using epitope-specific immunogen.
Clonality	Polyclonal

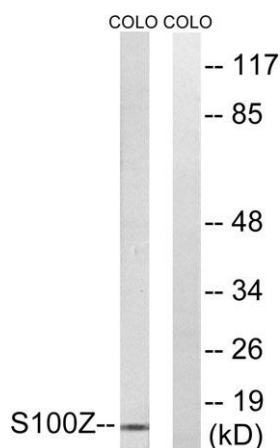
Concentration	1 mg/ml
Observed band	12kD
Human Gene ID	170591
Human Swiss-Prot Number	Q8WYG8
Alternative Names	S100Z; Protein S100-Z; S100 calcium-binding protein Z

Background

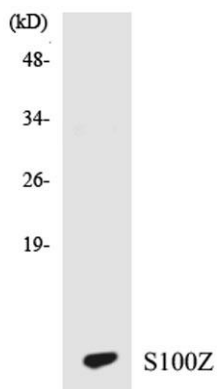
Members of the S100 protein family contain 2 calcium-binding EF-hands and exhibit cell-type specific expression patterns. For additional background information on S100 proteins, see MIM 114085.[supplied by OMIM, Mar 2008],



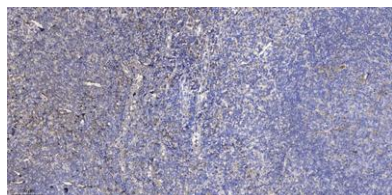
Western Blot analysis of COLO cells using S-100Z Polyclonal Antibody



Western blot analysis of lysates from COLO cells, using S100Z Antibody. The lane on the right is blocked with the synthesized peptide.



Western blot analysis of the lysates from HT-29 cells using S100Z antibody.



Immunohistochemical analysis of paraffin-embedded human tonsil. 1, Antibody was diluted at 1:200(4° overnight). 2, Tris-EDTA,pH9.0 was used for antigen retrieval. 3,Secondary antibody was diluted at 1:200(room temperature, 30min).