

**PWWP2B rabbit pAb****Cat#: orb767873 (Manual)**

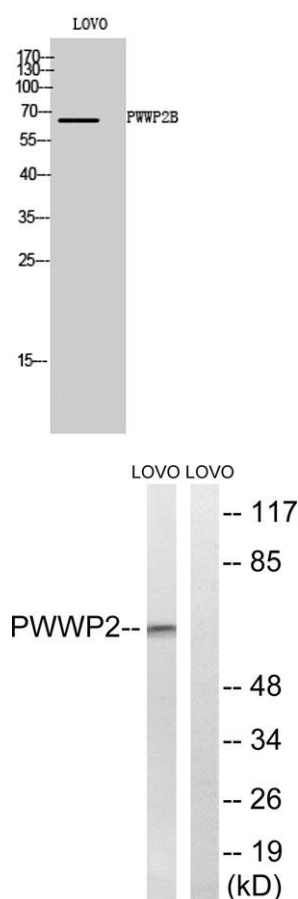
For research use only. Not intended for diagnostic use.

|                                 |  |
|---------------------------------|--|
| <b>Product Name</b>             | PWWP2B rabbit pAb  |
| <b>Host species</b>             | Rabbit   |
| <b>Applications</b>             | WB;IHC;IF;ELISA  |
| <b>Species Cross-Reactivity</b> | Human;Rat;Mouse;   |
| <b>Recommended dilutions</b>    | Western Blot: 1/500 - 1/2000. Immunohistochemistry: 1/100 - 1/300. ELISA: 1/20000. Not yet tested in other applications. |
| <b>Immunogen</b>                | The antiserum was produced against synthesized peptide derived from human PWWP2B. AA range:268-317                       |
| <b>Specificity</b>              | PWWP2B Polyclonal Antibody detects endogenous levels of PWWP2B protein.  |
| <b>Formulation</b>              | Liquid in PBS containing 50% glycerol, 0.5% BSA and 0.02% sodium azide..   |
| <b>Storage</b>                  | Store at -20°C. Avoid repeated freeze-thaw cycles.   |
| <b>Protein Name</b>             | PWWP domain-containing protein 2B  |
| <b>Gene Name</b>                | PWWP2B   |
| <b>Cellular localization</b>    | nucleoplasm,   |
| <b>Purification</b>             | The antibody was affinity-purified from rabbit antiserum by affinity-chromatography using epitope-specific immunogen.    |
| <b>Clonality</b>                | Polyclonal   |

|                                |  |
|--------------------------------|--|
| <b>Concentration</b>           | 1 mg/ml  |
| <b>Observed band</b>           | 64kD   |
| <b>Human Gene ID</b>           | 170394   |
| <b>Human Swiss-Prot Number</b> | Q6NUJ5   |
| <b>Alternative Names</b>       | PWWP2B; PWWP2; PWWP domain-containing protein 2B |

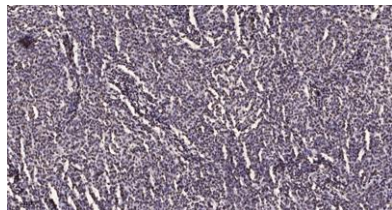
#### Background

PTM:Phosphorylated upon DNA damage, probably by ATM or ATR.,sequence caution:Translation N-terminally shortened.,similarity:Contains 1 PWWP domain.,



Western Blot analysis of LOVO cells using PWWP2B Polyclonal Antibody

Western blot analysis of lysates from LOVO cells, using PWWP2B Antibody. The lane on the right is blocked with the synthesized peptide.



**Immunohistochemical analysis of paraffin-embedded human brain tumor. 1, Antibody was diluted at 1:200(4° overnight). 2, Tris-EDTA,pH9.0 was used for antigen retrieval. 3,Secondary antibody was diluted at 1:200(room temperature, 45min).**