

**ARX rabbit pAb****Cat#: orb767872 (Manual)**

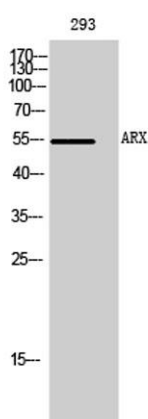
For research use only. Not intended for diagnostic use.

<b>Product Name</b>	ARX rabbit pAb
<b>Host species</b>	Rabbit
<b>Applications</b>	WB;ELISA
<b>Species Cross-Reactivity</b>	Human;Mouse;Rat
<b>Recommended dilutions</b>	Western Blot: 1/500 - 1/2000. ELISA: 1/5000. Not yet tested in other applications.
<b>Immunogen</b>	Synthesized peptide derived from ARX . at AA range: 250-330
<b>Specificity</b>	ARX Polyclonal Antibody detects endogenous levels of ARX protein.
<b>Formulation</b>	Liquid in PBS containing 50% glycerol, 0.5% BSA and 0.02% sodium azide..
<b>Storage</b>	Store at -20°C. Avoid repeated freeze-thaw cycles.
<b>Protein Name</b>	Homeobox protein ARX
<b>Gene Name</b>	ARX
<b>Cellular localization</b>	Nucleus .
<b>Purification</b>	The antibody was affinity-purified from rabbit antiserum by affinity-chromatography using epitope-specific immunogen.
<b>Clonality</b>	Polyclonal

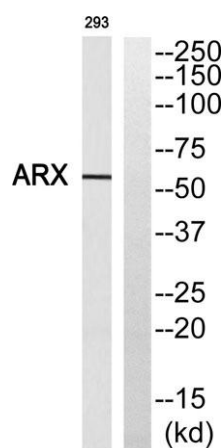
<b>Concentration</b>	1 mg/ml
<b>Observed band</b>	55kD
<b>Human Gene ID</b>	170302
<b>Human Swiss-Prot Number</b>	Q96QS3
<b>Alternative Names</b>	ARX; Homeobox protein ARX; Aristaless-related homeobox

### Background

This gene is a homeobox-containing gene expressed during development. The expressed protein contains two conserved domains, a C-peptide (or aristaless domain) and the prd-like class homeobox domain. It is a member of the group-II aristaless-related protein family whose members are expressed primarily in the central and/or peripheral nervous system. This gene is thought to be involved in CNS development. Expansion of a polyalanine tract and other mutations in this gene cause X-linked mental retardation and epilepsy. [provided by RefSeq, Jul 2016],



**Western Blot analysis of 293 cells using ARX Polyclonal Antibody cells nucleus extracted by Minute TM Cytoplasmic and Nuclear Fractionation kit (SC-003, Invent biotech, MN, USA).**



**Western blot analysis of ARX Antibody. The lane on the right is blocked with the ARX peptide.**



Explore. Bioreagents.

[www.biorbyt.com](http://www.biorbyt.com)

Biorbyt Ltd  
7 Signet Court, Swann Road, Cambridge, CB5 8LA. United Kingdom  
Email: [info@biorbyt.com](mailto:info@biorbyt.com) | Phone: +44 (0)1223 859-353 | Fax: +44 (0)1223 280-240

Biorbyt LLC  
68 TW Alexander Drive, Durham, NC 27709. United States  
Email: [info@biorbyt.com](mailto:info@biorbyt.com) | Phone: +1 (415) 906-5211 | Fax: +1 (415) 651-8558