

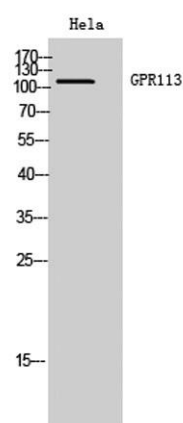
**GPR113 rabbit pAb****Cat#: orb767857 (Manual)**

For research use only. Not intended for diagnostic use.

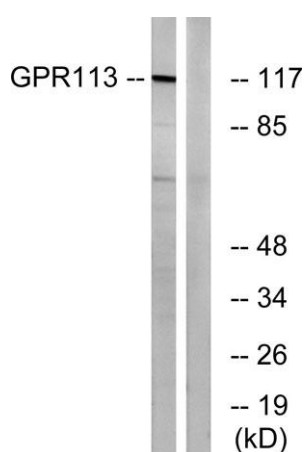
<b>Product Name</b>	GPR113 rabbit pAb
<b>Host species</b>	Rabbit
<b>Applications</b>	WB;ELISA
<b>Species Cross-Reactivity</b>	Human;Rat;Mouse;
<b>Recommended dilutions</b>	Western Blot: 1/500 - 1/2000. ELISA: 1/40000. Not yet tested in other applications.
<b>Immunogen</b>	The antiserum was produced against synthesized peptide derived from human GPR113. AA range:21-70
<b>Specificity</b>	GPR113 Polyclonal Antibody detects endogenous levels of GPR113 protein.
<b>Formulation</b>	Liquid in PBS containing 50% glycerol, 0.5% BSA and 0.02% sodium azide..
<b>Storage</b>	Store at -20°C. Avoid repeated freeze-thaw cycles.
<b>Protein Name</b>	Probable G-protein coupled receptor 113
<b>Gene Name</b>	GPR113
<b>Cellular localization</b>	Membrane ; Multi-pass membrane protein .
<b>Purification</b>	The antibody was affinity-purified from rabbit antiserum by affinity-chromatography using epitope-specific immunogen.
<b>Clonality</b>	Polyclonal

<b>Concentration</b>	1 mg/ml
<b>Observed band</b>	116kD
<b>Human Gene ID</b>	165082
<b>Human Swiss-Prot Number</b>	Q8IZF5
<b>Alternative Names</b>	GPR113; PGR23; Probable G-protein coupled receptor 113; G-protein coupled receptor PGR23

**Background** function:Orphan receptor.,similarity:Belongs to the G-protein coupled receptor 2 family. LN-TM7 subfamily.,similarity:Contains 1 GPS domain.,



**Western Blot analysis of HeLa cells using GPR113 Polyclonal Antibody diluted at 1:2000**



**Western blot analysis of lysates from LOVO cells, using GPR113 Antibody. The lane on the right is blocked with the synthesized peptide.**