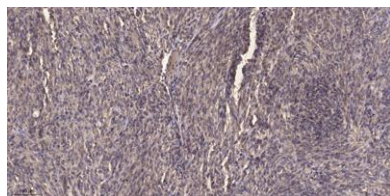


DD1 rabbit pAb**Cat#: orb767853 (Manual)**

For research use only. Not intended for diagnostic use.

Product Name	DD1 rabbit pAb
Host species	Rabbit
Applications	IHC;IF;ELISA
Species Cross-Reactivity	Human;Rat;Mouse;
Recommended dilutions	Immunohistochemistry: 1/100 - 1/300. ELISA: 1/10000. Not yet tested in other applications.
Immunogen	Synthesized peptide derived from DD1 . at AA range: 30-110
Specificity	DD1 Polyclonal Antibody detects endogenous levels of DD1 protein.
Formulation	Liquid in PBS containing 50% glycerol, 0.5% BSA and 0.02% sodium azide..
Storage	Store at -20°C. Avoid repeated freeze-thaw cycles.
Protein Name	Aldo-keto reductase family 1 member C1
Gene Name	AKR1C1
Cellular localization	Cytoplasm, cytosol .
Purification	The antibody was affinity-purified from rabbit antiserum by affinity-chromatography using epitope-specific immunogen.
Clonality	Polyclonal

Concentration	1 mg/ml
Observed band	37kD
Human Gene ID	1645
Human Swiss-Prot Number	Q04828
Alternative Names	AKR1C1; DDH; DDH1; Aldo-keto reductase family 1 member C1; 20-alpha-hydroxysteroid dehydrogenase; 20-alpha-HSD; Chlordecone reductase homolog HAKRC; Dihydrodiol dehydrogenase 1/2; DD1/DD2; High-affinity hepatic bile acid-binding protein; HB
Background	This gene encodes a member of the aldo/keto reductase superfamily, which consists of more than 40 known enzymes and proteins. These enzymes catalyze the conversion of aldehydes and ketones to their corresponding alcohols by utilizing NADH and/or NADPH as cofactors. The enzymes display overlapping but distinct substrate specificity. This enzyme catalyzes the reaction of progesterone to the inactive form 20-alpha-hydroxy-progesterone. This gene shares high sequence identity with three other gene members and is clustered with those three genes at chromosome 10p15-p14. [provided by RefSeq, Jul 2008],



Immunohistochemical analysis of paraffin-embedded human Colon cancer. 1, Antibody was diluted at 1:200(4° overnight). 2, Tris-EDTA,pH9.0 was used for antigen retrieval. 3,Secondary antibody was diluted at 1:200(room temperature, 45min).