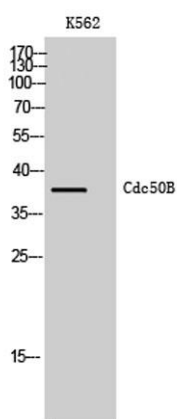


**Cdc50B rabbit pAb****Cat#: orb767841 (Manual)**

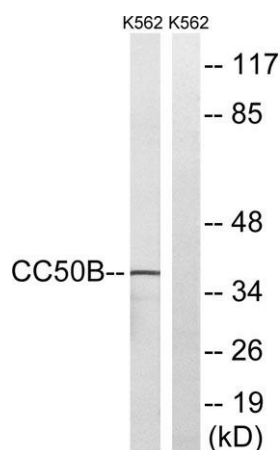
For research use only. Not intended for diagnostic use.

<b>Product Name</b>	Cdc50B rabbit pAb
<b>Host species</b>	Rabbit
<b>Applications</b>	WB;ELISA
<b>Species Cross-Reactivity</b>	Human;Mouse
<b>Recommended dilutions</b>	Western Blot: 1/500 - 1/2000. ELISA: 1/40000. Not yet tested in other applications.
<b>Immunogen</b>	The antiserum was produced against synthesized peptide derived from human TMEM30B. AA range:91-140
<b>Specificity</b>	Cdc50B Polyclonal Antibody detects endogenous levels of Cdc50B protein.
<b>Formulation</b>	Liquid in PBS containing 50% glycerol, 0.5% BSA and 0.02% sodium azide..
<b>Storage</b>	Store at -20°C. Avoid repeated freeze-thaw cycles.
<b>Protein Name</b>	Cell cycle control protein 50B
<b>Gene Name</b>	TMEM30B
<b>Cellular localization</b>	Cell membrane ; Multi-pass membrane protein .
<b>Purification</b>	The antibody was affinity-purified from rabbit antiserum by affinity-chromatography using epitope-specific immunogen.
<b>Clonality</b>	Polyclonal

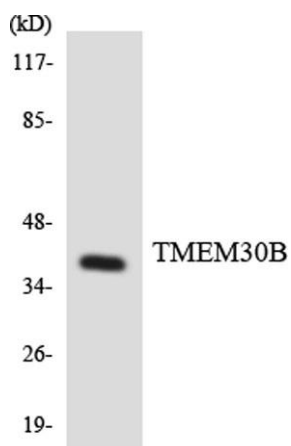
<b>Concentration</b>	1 mg/ml
<b>Observed band</b>	38kD
<b>Human Gene ID</b>	161291
<b>Human Swiss-Prot Number</b>	Q3MIR4
<b>Alternative Names</b>	TMEM30B; CDC50B; Cell cycle control protein 50B; Transmembrane protein 30B
<b>Background</b>	similarity:Belongs to the CDC50/LEM3 family.,



Western Blot analysis of K562 cells using Cdc50B Polyclonal Antibody



Western blot analysis of lysates from K562 cells, using TMEM30B Antibody. The lane on the right is blocked with the synthesized peptide.



Western blot analysis of the lysates from HeLa cells using TMEM30B antibody.