

**GPR180 rabbit pAb****Cat#: orb767835 (Manual)**

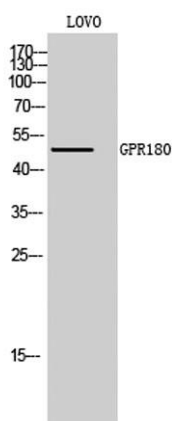
For research use only. Not intended for diagnostic use.

<b>Product Name</b>	GPR180 rabbit pAb
<b>Host species</b>	Rabbit
<b>Applications</b>	WB;IHC;IF;ELISA
<b>Species Cross-Reactivity</b>	Human;Mouse
<b>Recommended dilutions</b>	Western Blot: 1/500 - 1/2000. Immunohistochemistry: 1/100 - 1/300. Immunofluorescence: 1/200 - 1/1000. ELISA: 1/10000. Not yet tested in other applications.
<b>Immunogen</b>	The antiserum was produced against synthesized peptide derived from human GPR180. AA range:241-290
<b>Specificity</b>	GPR180 Polyclonal Antibody detects endogenous levels of GPR180 protein.
<b>Formulation</b>	Liquid in PBS containing 50% glycerol, 0.5% BSA and 0.02% sodium azide..
<b>Storage</b>	Store at -20°C. Avoid repeated freeze-thaw cycles.
<b>Protein Name</b>	Integral membrane protein GPR180
<b>Gene Name</b>	GPR180
<b>Cellular localization</b>	Membrane ; Multi-pass membrane protein .
<b>Purification</b>	The antibody was affinity-purified from rabbit antiserum by affinity-chromatography using epitope-specific immunogen.
<b>Clonality</b>	Polyclonal

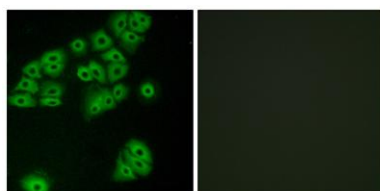
<b>Concentration</b>	1 mg/ml
<b>Observed band</b>	50kD
<b>Human Gene ID</b>	160897
<b>Human Swiss-Prot Number</b>	Q86V85
<b>Alternative Names</b>	GPR180; ITR; Integral membrane protein GPR180; Intimal thickness-related receptor

### Background

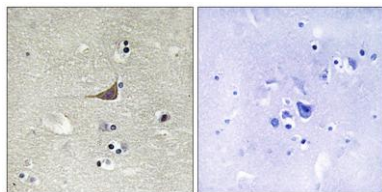
This gene encodes a protein that is a member of the G protein-coupled receptor superfamily. This protein is produced predominantly in vascular smooth muscle cells and may play an important role in the regulation of vascular remodeling. [provided by RefSeq, Jul 2008],



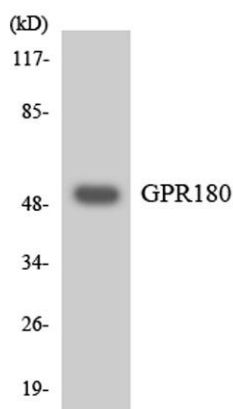
**Western Blot analysis of LOVO cells using GPR180 Polyclonal Antibody**



**Immunofluorescence analysis of A549 cells, using GPR180 Antibody. The picture on the right is blocked with the synthesized peptide.**



**Immunohistochemistry analysis of paraffin-embedded human brain tissue, using GPR180 Antibody. The picture on the right is blocked with the synthesized peptide.**



**Western blot analysis of the lysates from Jurkat cells using GPR180 antibody.**