

**AKAP 14 rabbit pAb****Cat#: orb767824 (Manual)**

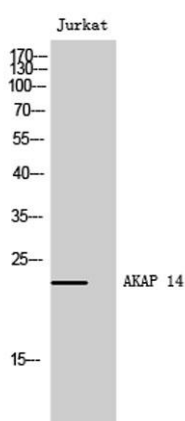
For research use only. Not intended for diagnostic use.

<b>Product Name</b>	AKAP 14 rabbit pAb
<b>Host species</b>	Rabbit
<b>Applications</b>	WB;IHC;IF;ELISA
<b>Species Cross-Reactivity</b>	Human;Rat;Mouse;
<b>Recommended dilutions</b>	Western Blot: 1/500 - 1/2000. Immunohistochemistry: 1/100 - 1/300. Immunofluorescence: 1/200 - 1/1000. ELISA: 1/5000. Not yet tested in other applications.
<b>Immunogen</b>	The antiserum was produced against synthesized peptide derived from human AKAP14. AA range:1-50
<b>Specificity</b>	AKAP 14 Polyclonal Antibody detects endogenous levels of AKAP 14 protein.
<b>Formulation</b>	Liquid in PBS containing 50% glycerol, 0.5% BSA and 0.02% sodium azide..
<b>Storage</b>	Store at -20°C. Avoid repeated freeze-thaw cycles.
<b>Protein Name</b>	A-kinase anchor protein 14
<b>Gene Name</b>	AKAP14
<b>Cellular localization</b>	Cytoplasm .
<b>Purification</b>	The antibody was affinity-purified from rabbit antiserum by affinity-chromatography using epitope-specific immunogen.
<b>Clonality</b>	Polyclonal

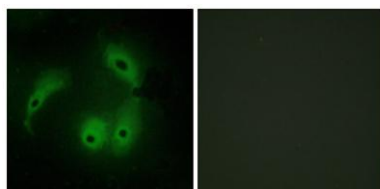
<b>Concentration</b>	1 mg/ml
<b>Observed band</b>	23kD
<b>Human Gene ID</b>	158798
<b>Human Swiss-Prot Number</b>	Q86UN6
<b>Alternative Names</b>	AKAP14; AKAP28; A-kinase anchor protein 14; AKAP-14; A-kinase anchor protein 28 kDa; AKAP 28; Protein kinase A-anchoring protein 14; PRKA14

### Background

The A-kinase anchor proteins (AKAPs) are a group of structurally diverse proteins, which have the common function of binding to the regulatory subunit of protein kinase A (PKA) and confining the holoenzyme to discrete locations within the cell. This gene encodes a member of the AKAP family. The protein anchors PKA in ciliary axonemes and, in this way, may play a role in regulating ciliary beat frequency. Alternate transcriptional splice variants, encoding different isoforms, have been characterized. [provided by RefSeq, Jul 2008],



**Western Blot analysis of Jurkat cells using AKAP 14 Polyclonal Antibody**



**Immunofluorescence analysis of HeLa cells, using AKAP14 Antibody. The picture on the right is blocked with the synthesized peptide.**

