

**CYP11A1 rabbit pAb****Cat#: orb767822 (Manual)**

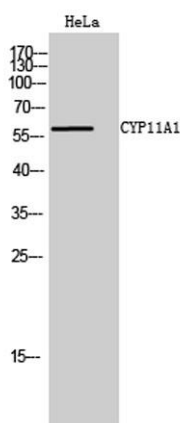
For research use only. Not intended for diagnostic use.

<b>Product Name</b>	CYP11A1 rabbit pAb
<b>Host species</b>	Rabbit
<b>Applications</b>	WB;ELISA
<b>Species Cross-Reactivity</b>	Human
<b>Recommended dilutions</b>	Western Blot: 1/500 - 1/2000. ELISA: 1/5000. Not yet tested in other applications.
<b>Immunogen</b>	The antiserum was produced against synthesized peptide derived from human Cytochrome P450 11A1. AA range:412-461
<b>Specificity</b>	CYP11A1 Polyclonal Antibody detects endogenous levels of CYP11A1 protein.
<b>Formulation</b>	Liquid in PBS containing 50% glycerol, 0.5% BSA and 0.02% sodium azide..
<b>Storage</b>	Store at -20°C. Avoid repeated freeze-thaw cycles.
<b>Protein Name</b>	Cholesterol side-chain cleavage enzyme mitochondrial
<b>Gene Name</b>	CYP11A1
<b>Cellular localization</b>	Mitochondrion inner membrane ; Peripheral membrane protein . Localizes to the matrix side of the mitochondrion inner membrane. .
<b>Purification</b>	The antibody was affinity-purified from rabbit antiserum by affinity-chromatography using       epitope-specific immunogen.
<b>Clonality</b>	Polyclonal

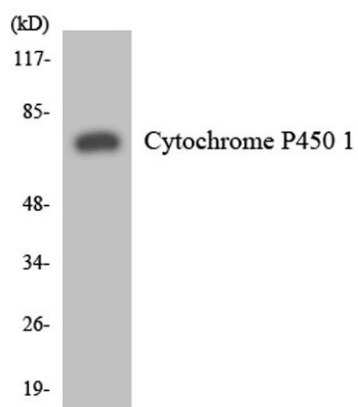
<b>Concentration</b>	1 mg/ml
<b>Observed band</b>	60kD
<b>Human Gene ID</b>	1583
<b>Human Swiss-Prot Number</b>	P05108
<b>Alternative Names</b>	CYP11A1; CYP11A; Cholesterol side-chain cleavage enzyme; mitochondrial; CYPXIA1; Cholesterol desmolase; Cytochrome P450 11A1; Cytochrome P450(scc)

**Background**

cytochrome P450 family 11 subfamily A member 1(CYP11A1) Homo sapiens This gene encodes a member of the cytochrome P450 superfamily of enzymes. The cytochrome P450 proteins are monooxygenases which catalyze many reactions involved in drug metabolism and synthesis of cholesterol, steroids and other lipids. This protein localizes to the mitochondrial inner membrane and catalyzes the conversion of cholesterol to pregnenolone, the first and rate-limiting step in the synthesis of the steroid hormones. Two transcript variants encoding different isoforms have been found for this gene. The cellular location of the smaller isoform is unclear since it lacks the mitochondrial-targeting transit peptide. [provided by RefSeq, Jul 2008],



**Western Blot analysis of HeLa cells using CYP11A1 Polyclonal Antibody**



**Western blot analysis of the lysates from HeLa cells using Cytochrome P450 11A1 antibody.**