

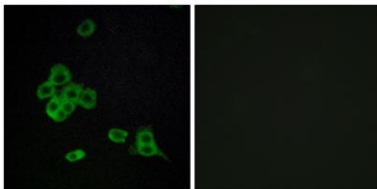
**CYP2C8 rabbit pAb****Cat#: orb767805 (Manual)**

For research use only. Not intended for diagnostic use.

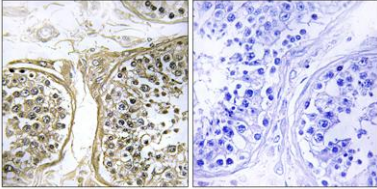
<b>Product Name</b>	CYP2C8 rabbit pAb
<b>Host species</b>	Rabbit
<b>Applications</b>	IHC;IF;ELISA
<b>Species Cross-Reactivity</b>	Human;Rat;Mouse;
<b>Recommended dilutions</b>	IHC-p: 1/100 - 1/300. IF:1:50-200 ELISA: 1/20000. Not yet tested in other applications.
<b>Immunogen</b>	The antiserum was produced against synthesized peptide derived from human CYP2C8. AA range:241-290
<b>Specificity</b>	CYP2C8 Polyclonal Antibody detects endogenous levels of CYP2C8 protein.
<b>Formulation</b>	Liquid in PBS containing 50% glycerol, 0.5% BSA and 0.02% sodium azide..
<b>Storage</b>	Store at -20°C. Avoid repeated freeze-thaw cycles.
<b>Protein Name</b>	Cytochrome P450 2C8
<b>Gene Name</b>	CYP2C8
<b>Cellular localization</b>	Endoplasmic reticulum membrane; Peripheral membrane protein. Microsome membrane; Peripheral membrane protein.
<b>Purification</b>	The antibody was affinity-purified from rabbit antiserum by affinity-chromatography using epitope-specific immunogen.
<b>Clonality</b>	Polyclonal

<b>Concentration</b>	1 mg/ml
<b>Observed band</b>	
<b>Human Gene ID</b>	1558
<b>Human Swiss-Prot Number</b>	P10632
<b>Alternative Names</b>	CYP2C8; Cytochrome P450 2C8; CYP2C8; Cytochrome P450 IIC2; Cytochrome P450 MP-12; Cytochrome P450 MP-20; Cytochrome P450 form 1; S-mephenytoin 4-hydroxylase

**Background** This gene encodes a member of the cytochrome P450 superfamily of enzymes. The cytochrome P450 proteins are monooxygenases which catalyze many reactions involved in drug metabolism and synthesis of cholesterol, steroids and other lipids. This protein localizes to the endoplasmic reticulum and its expression is induced by phenobarbital. The enzyme is known to metabolize many xenobiotics, including the anticonvulsive drug mephenytoin, benzo(a)pyrene, 7-ethoxycoumarin, and the anti-cancer drug taxol. This gene is located within a cluster of cytochrome P450 genes on chromosome 10q24. Several transcript variants encoding a few different isoforms have been found for this gene. [provided by RefSeq, Nov 2010],



**Immunofluorescence analysis of Cytochrome P450 2C8 Antibody. The lane on the right is blocked with the Cytochrome P450 2C8 peptide.**



**Immunohistochemistry analysis of paraffin-embedded human testis, using Cytochrome P450 2C8 Antibody. The picture on the right is blocked with the synthesized peptide.**