

**CYP3A7 rabbit pAb****Cat#: orb767803 (Manual)**

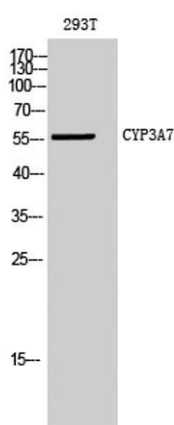
For research use only. Not intended for diagnostic use.

<b>Product Name</b>	CYP3A7 rabbit pAb
<b>Host species</b>	Rabbit
<b>Applications</b>	WB;ELISA
<b>Species Cross-Reactivity</b>	Human;Rat;Mouse;
<b>Recommended dilutions</b>	Western Blot: 1/500 - 1/2000. ELISA: 1/20000. Not yet tested in other applications.
<b>Immunogen</b>	The antiserum was produced against synthesized peptide derived from human Cytochrome P450 3A7. AA range:231-280
<b>Specificity</b>	CYP3A7 Polyclonal Antibody detects endogenous levels of CYP3A7 protein.
<b>Formulation</b>	Liquid in PBS containing 50% glycerol, 0.5% BSA and 0.02% sodium azide..
<b>Storage</b>	Store at -20°C. Avoid repeated freeze-thaw cycles.
<b>Protein Name</b>	Cytochrome P450 3A7
<b>Gene Name</b>	CYP3A7
<b>Cellular localization</b>	Endoplasmic reticulum membrane; Peripheral membrane protein. Microsome membrane ; Peripheral membrane protein.
<b>Purification</b>	The antibody was affinity-purified from rabbit antiserum by affinity-chromatography using epitope-specific immunogen.
<b>Clonality</b>	Polyclonal

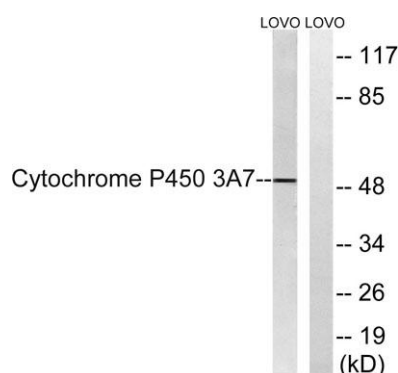
<b>Concentration</b>	1 mg/ml
<b>Observed band</b>	50kD
<b>Human Gene ID</b>	1551
<b>Human Swiss-Prot Number</b>	P24462
<b>Alternative Names</b>	CYP3A7; Cytochrome P450 3A7; CYP11A7; Cytochrome P450-HFLA

### Background

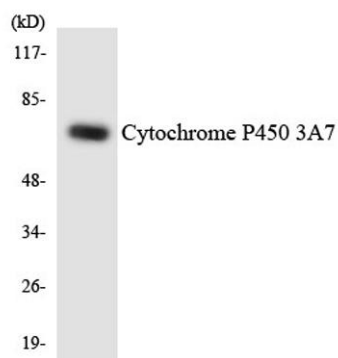
This gene encodes a member of the cytochrome P450 superfamily of enzymes, which participate in drug metabolism and the synthesis of cholesterol, steroids and other lipids. This enzyme hydroxylates testosterone and dehydroepiandrosterone 3-sulphate, which is involved in the formation of estriol during pregnancy. This gene is part of a cluster of related genes on chromosome 7q21.1. Naturally-occurring readthrough transcription occurs between this gene and the downstream CYP3A51P pseudogene and is represented by GeneID:100861540. [provided by RefSeq, Jan 2015],



**Western Blot analysis of 293T cells using CYP3A7 Polyclonal Antibody diluted at 1:500**



**Western blot analysis of lysates from LOVO cells, using Cytochrome P450 3A7 Antibody. The lane on the right is blocked with the synthesized peptide.**



**Western blot analysis of the lysates from K562 cells using Cytochrome P450 3A7 antibody.**