

Angiotensin-L1 rabbit pAb

Cat#: orb767800 (Manual)

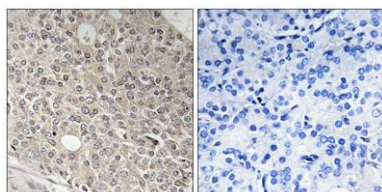
For research use only. Not intended for diagnostic use.

Product Name	Angiotensin-L1 rabbit pAb
Host species	Rabbit
Applications	IHC;IF;ELISA
Species Cross-Reactivity	Human;Mouse
Recommended dilutions	Immunohistochemistry: 1/100 - 1/300. ELISA: 1/10000. Not yet tested in other applications.
Immunogen	The antiserum was produced against synthesized peptide derived from human AMOTL1. AA range:441-490
Specificity	Angiotensin-L1 Polyclonal Antibody detects endogenous levels of Angiotensin-L1 protein.
Formulation	Liquid in PBS containing 50% glycerol, 0.5% BSA and 0.02% sodium azide..
Storage	Store at -20°C. Avoid repeated freeze-thaw cycles.
Protein Name	Angiotensin-like protein 1
Gene Name	AMOTL1
Cellular localization	Cell junction, tight junction .
Purification	The antibody was affinity-purified from rabbit antiserum by affinity-chromatography using epitope-specific immunogen.
Clonality	Polyclonal

Concentration	1 mg/ml
Observed band	
Human Gene ID	154810
Human Swiss-Prot Number	Q8IY63
Alternative Names	AMOTL1; Angiomotin-like protein 1

Background

The protein encoded by this gene is a peripheral membrane protein that is a component of tight junctions or TJs. TJs form an apical junctional structure and act to control paracellular permeability and maintain cell polarity. This protein is related to angiomotin, an angiostatin binding protein that regulates endothelial cell migration and capillary formation. Two transcript variants encoding different isoforms have been found for this gene. [provided by RefSeq, Jul 2014],



Immunohistochemistry analysis of paraffin-embedded human prostate carcinoma tissue, using AMOTL1 Antibody. The picture on the right is blocked with the synthesized peptide.