

## Arylsulfatase K rabbit pAb

**Cat#: orb767791 (Manual)**

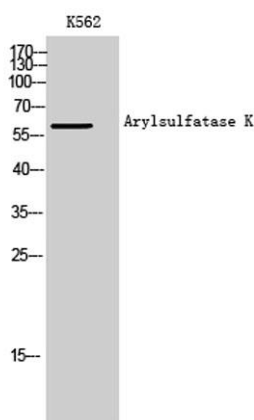
For research use only. Not intended for diagnostic use.

<b>Product Name</b>	Arylsulfatase K rabbit pAb
<b>Host species</b>	Rabbit
<b>Applications</b>	WB;IHC;IF;ELISA
<b>Species Cross-Reactivity</b>	Human;Mouse;Rat
<b>Recommended dilutions</b>	Western Blot: 1/500 - 1/2000. Immunohistochemistry: 1/100 - 1/300. ELISA: 1/20000. Not yet tested in other applications.
<b>Immunogen</b>	The antiserum was produced against synthesized peptide derived from human ARSK. AA range:481-530
<b>Specificity</b>	Arylsulfatase K Polyclonal Antibody detects endogenous levels of Arylsulfatase K protein.
<b>Formulation</b>	Liquid in PBS containing 50% glycerol, 0.5% BSA and 0.02% sodium azide..
<b>Storage</b>	Store at -20°C. Avoid repeated freeze-thaw cycles.
<b>Protein Name</b>	Arylsulfatase K
<b>Gene Name</b>	ARSK
<b>Cellular localization</b>	Secreted . Lysosome .
<b>Purification</b>	The antibody was affinity-purified from rabbit antiserum by affinity-chromatography using epitope-specific immunogen.
<b>Clonality</b>	Polyclonal

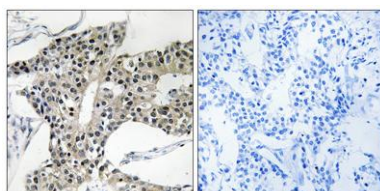
<b>Concentration</b>	1 mg/ml
<b>Observed band</b>	62kD
<b>Human Gene ID</b>	153642
<b>Human Swiss-Prot Number</b>	Q6UWY0
<b>Alternative Names</b>	ARSK; TSULF; Arylsulfatase K; ASK; Telethon sulfatase

### Background

Sulfatases (EC 3.1.5.6), such as ARSK, hydrolyze sulfate esters from sulfated steroids, carbohydrates, proteoglycans, and glycolipids. They are involved in hormone biosynthesis, modulation of cell signaling, and degradation of macromolecules (Sardiello et al., 2005 [PubMed 16174644]).[supplied by OMIM, Mar 2008],



**Western Blot analysis of K562 cells using Arylsulfatase K Polyclonal Antibody**



**Immunohistochemistry analysis of paraffin-embedded human breast carcinoma tissue, using ARSK Antibody. The picture on the right is blocked with the synthesized peptide.**