

PP4R2 rabbit pAb**Cat#: orb767787 (Manual)**

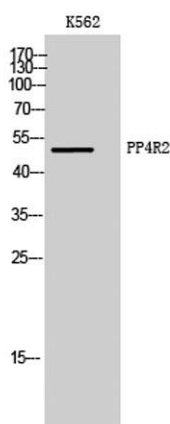
For research use only. Not intended for diagnostic use.

Product Name	PP4R2 rabbit pAb
Host species	Rabbit
Applications	WB;IHC;IF;ELISA
Species Cross-Reactivity	Human;Monkey
Recommended dilutions	Western Blot: 1/500 - 1/2000. Immunohistochemistry: 1/100 - 1/300. ELISA: 1/5000. Not yet tested in other applications.
Immunogen	The antiserum was produced against synthesized peptide derived from human PPP4R2. AA range:171-220
Specificity	PP4R2 Polyclonal Antibody detects endogenous levels of PP4R2 protein.
Formulation	Liquid in PBS containing 50% glycerol, 0.5% BSA and 0.02% sodium azide..
Storage	Store at -20°C. Avoid repeated freeze-thaw cycles.
Protein Name	Serine/threonine-protein phosphatase 4 regulatory subunit 2
Gene Name	PPP4R2
Cellular localization	Cytoplasm, cytoskeleton, microtubule organizing center, centrosome. Nucleus. Ionizing radiation induces relocation to nuclear foci and colocalization with RPA2.
Purification	The antibody was affinity-purified from rabbit antiserum by affinity-chromatography using epitope-specific immunogen.

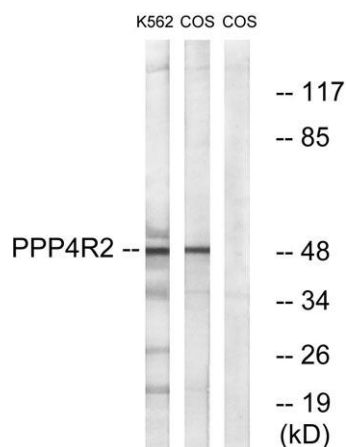
Clonality	Polyclonal
Concentration	1 mg/ml
Observed band	50kD
Human Gene ID	151987
Human Swiss-Prot Number	Q9NY27
Alternative Names	PPP4R2; SBB157; Serine/threonine-protein phosphatase 4 regulatory subunit 2

Background

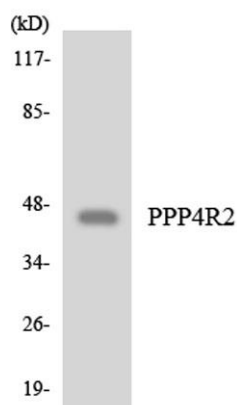
The protein encoded by this gene is a regulatory subunit of the serine/threonine-protein phosphatase 4 complex. In addition to being required for efficient DNA double strand break repair, this complex plays a role in organization of microtubules at centrosomes and processing of spliceosomal snRNPs. Several transcript variants encoding different isoforms have been found for this gene. [provided by RefSeq, Dec 2015].



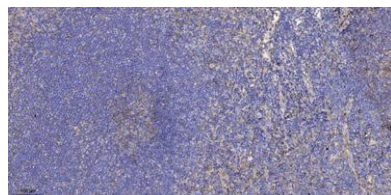
Western Blot analysis of K562 cells using PP4R2 Polyclonal Antibody



Western blot analysis of lysates from K562 and COS7 cells, using PPP4R2 Antibody. The lane on the right is blocked with the synthesized peptide.



Western blot analysis of the lysates from COLO205 cells using PPP4R2 antibody.



Immunohistochemical analysis of paraffin-embedded human tonsil. 1, Antibody was diluted at 1:200(4° overnight). 2, Tris-EDTA,pH9.0 was used for antigen retrieval. 3,Secondary antibody was diluted at 1:200(room temperature, 30min).