

MCT14 rabbit pAb**Cat#: orb767783 (Manual)**

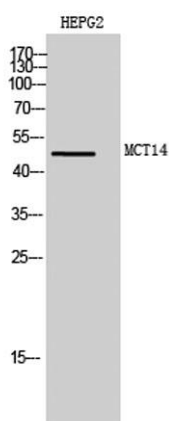
For research use only. Not intended for diagnostic use.

Product Name	MCT14 rabbit pAb
Host species	Rabbit
Applications	WB;ELISA
Species Cross-Reactivity	Human;Mouse
Recommended dilutions	Western Blot: 1/500 - 1/2000. ELISA: 1/10000. Not yet tested in other applications.
Immunogen	The antiserum was produced against synthesized peptide derived from human MOT14. AA range:131-180
Specificity	MCT14 Polyclonal Antibody detects endogenous levels of MCT14 protein.
Formulation	Liquid in PBS containing 50% glycerol, 0.5% BSA and 0.02% sodium azide..
Storage	Store at -20°C. Avoid repeated freeze-thaw cycles.
Protein Name	Monocarboxylate transporter 14
Gene Name	SLC16A14
Cellular localization	Cell membrane ; Multi-pass membrane protein .
Purification	The antibody was affinity-purified from rabbit antiserum by affinity-chromatography using epitope-specific immunogen.
Clonality	Polyclonal

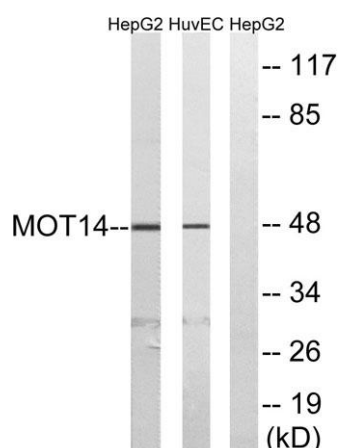
Concentration	1 mg/ml
Observed band	48kD
Human Gene ID	151473
Human Swiss-Prot Number	Q7RTX9
Alternative Names	SLC16A14; MCT14; Monocarboxylate transporter 14; MCT 14; Solute carrier family 16 member 14

Background

function: Proton-linked monocarboxylate transporter. Catalyzes the rapid transport across the plasma membrane of many monocarboxylates. similarity: Belongs to the major facilitator superfamily. Monocarboxylate porter (TC 2.A.1.13) family. ,



Western Blot analysis of HEPG2 cells using MCT14 Polyclonal Antibody diluted at 1:1000



Western blot analysis of lysates from HUVEC and HepG2 cells, using MOT14 Antibody. The lane on the right is blocked with the synthesized peptide.