

ALS2CR11 rabbit pAb**Cat#: orb767780 (Manual)**

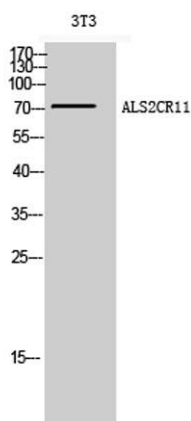
For research use only. Not intended for diagnostic use.

Product Name	ALS2CR11 rabbit pAb
Host species	Rabbit
Applications	WB;ELISA
Species Cross-Reactivity	Human;Rat;Mouse;
Recommended dilutions	Western Blot: 1/500 - 1/2000. ELISA: 1/40000. Not yet tested in other applications.
Immunogen	The antiserum was produced against synthesized peptide derived from human ALS2CR11. AA range:491-540
Specificity	ALS2CR11 Polyclonal Antibody detects endogenous levels of ALS2CR11 protein.
Formulation	Liquid in PBS containing 50% glycerol, 0.5% BSA and 0.02% sodium azide..
Storage	Store at -20°C. Avoid repeated freeze-thaw cycles.
Protein Name	Amyotrophic lateral sclerosis 2 chromosomal region candidate gene 11 protein
Gene Name	ALS2CR11
Cellular localization	
Purification	The antibody was affinity-purified from rabbit antiserum by affinity-chromatography using epitope-specific immunogen.
Clonality	Polyclonal

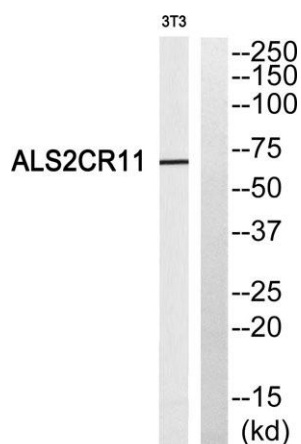
Concentration	1 mg/ml
Observed band	72kD
Human Gene ID	151254
Human Swiss-Prot Number	Q53TS8
Alternative Names	ALS2CR11; Amyotrophic lateral sclerosis 2 chromosomal region candidate gene 11 protein

Background

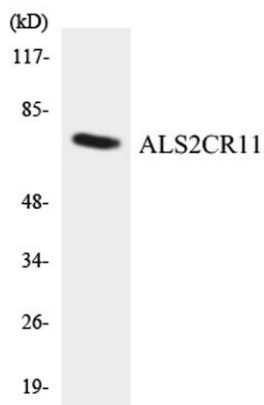
An autosomal recessive form of juvenile amyotrophic lateral sclerosis was originally mapped to a region of chromosome 2 that includes this gene. The encoded protein contains a calcium-dependent membrane targeting C2 domain. This domain is often found in proteins that are involved in membrane trafficking and signal transduction. [provided by RefSeq, Jun 2016],



Western Blot analysis of 3T3 cells using ALS2CR11 Polyclonal Antibody



Western blot analysis of ALS2CR11 Antibody. The lane on the right is blocked with the ALS2CR11 peptide.



Western blot analysis of the lysates from COLO205 cells using ALS2CR11 antibody.