

Sgo2 rabbit pAb**Cat#: orb767779 (Manual)**

For research use only. Not intended for diagnostic use.

Product Name	Sgo2 rabbit pAb
Host species	Rabbit
Applications	IHC;IF;ELISA
Species Cross-Reactivity	Human;Rat;Mouse;
Recommended dilutions	Immunohistochemistry: 1/100 - 1/300. ELISA: 1/10000. Not yet tested in other applications.
Immunogen	The antiserum was produced against synthesized peptide derived from human SGOL2. AA range:681-730
Specificity	Sgo2 Polyclonal Antibody detects endogenous levels of Sgo2 protein.
Formulation	Liquid in PBS containing 50% glycerol, 0.5% BSA and 0.02% sodium azide..
Storage	Store at -20°C. Avoid repeated freeze-thaw cycles.
Protein Name	Shugoshin-like 2
Gene Name	SGOL2
Cellular localization	Nucleus . Chromosome, centromere . Chromosome, centromere, kinetochore . During meiosis I, accumulates at centromeres during diplotene, and colocalizes differentially with the cohesin subunits RAD21 and REC8 at metaphase I centromeres (By similarity). SGO2 and RAD21 change their relative distributions during telophase I when sister-kinetochore association is lost (By similarity). During meiosis II, it shows a striking tension-dependent redistribution within centromeres throughout chromosome congression during prometaphase II, as it does during mitosis (By similarity). In HeLa cells, localizes at centromeres throughout prophase until metaphase and disappears at anaphase (PubMed:17485487). Centromeric localization

requires the presence of BUB1 and AUKRB (PubMed:17485487). .

Purification

The antibody was affinity-purified from rabbit antiserum by affinity-chromatography using epitope-specific immunogen.

Clonality

Polyclonal

Concentration

1 mg/ml

Observed band

Human Gene ID

151246

Human Swiss-Prot Number

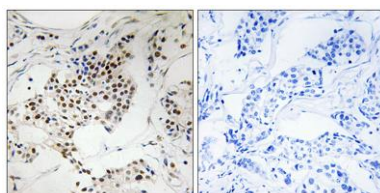
Q562F6

Alternative Names

SGOL2; Shugoshin-like 2; Shugoshin-2; Sgo2; Tripin

Background

function:During meiosis, protects centromeric cohesion complexes until metaphase II/anaphase II transition, preventing premature release of meiosis-specific REC8 cohesin complexes from anaphase I centromeres. Is thus essential for an accurate gametogenesis (By similarity). May act by targeting PPP2CA to centromeres, thus leading to cohesin dephosphorylation.,PTM:Phosphorylated upon DNA damage, probably by ATM or ATR.,sequence caution:Contaminating sequence. Potential poly-A sequence.,similarity:Belongs to the shugoshin family.,subcellular location:In HeLa cells, localizes at centromeres throughout prophase until metaphase and disappears at anaphase.,subunit:Directly interacts with PPP2CA.,



Immunohistochemistry analysis of paraffin-embedded human breast carcinoma, using SGOL2 Antibody. The picture on the right is blocked with the synthesized peptide.