

**CtBP1 rabbit pAb****Cat#: orb767758 (Manual)**

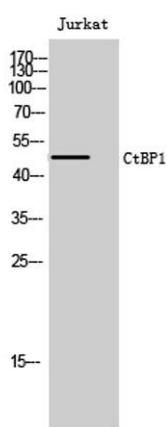
For research use only. Not intended for diagnostic use.

<b>Product Name</b>	CtBP1 rabbit pAb
<b>Host species</b>	Rabbit
<b>Applications</b>	WB;IHC;IF;ELISA
<b>Species Cross-Reactivity</b>	Human;Mouse;Rat
<b>Recommended dilutions</b>	Western Blot: 1/500 - 1/2000. Immunohistochemistry: 1/100 - 1/300. ELISA: 1/20000. Not yet tested in other applications.
<b>Immunogen</b>	The antiserum was produced against synthesized peptide derived from human CtBP1. AA range:388-437
<b>Specificity</b>	CtBP1 Polyclonal Antibody detects endogenous levels of CtBP1 protein.
<b>Formulation</b>	Liquid in PBS containing 50% glycerol, 0.5% BSA and 0.02% sodium azide..
<b>Storage</b>	Store at -20°C. Avoid repeated freeze-thaw cycles.
<b>Protein Name</b>	C-terminal-binding protein 1
<b>Gene Name</b>	CTBP1
<b>Cellular localization</b>	Cytoplasm . Nucleus .
<b>Purification</b>	The antibody was affinity-purified from rabbit antiserum by affinity-chromatography using epitope-specific immunogen.
<b>Clonality</b>	Polyclonal

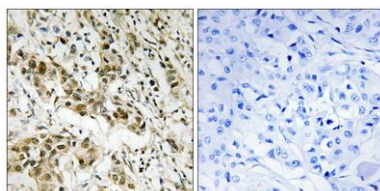
<b>Concentration</b>	1 mg/ml
<b>Observed band</b>	48kD
<b>Human Gene ID</b>	1487
<b>Human Swiss-Prot Number</b>	Q13363
<b>Alternative Names</b>	CTBP1; CTBP; C-terminal-binding protein 1; CtBP1

### Background

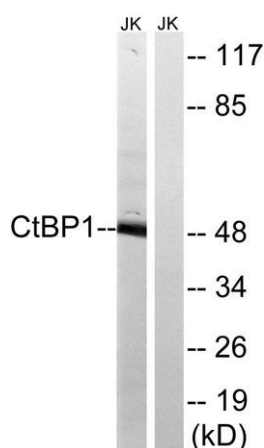
This gene encodes a protein that binds to the C-terminus of adenovirus E1A proteins. This phosphoprotein is a transcriptional repressor and may play a role during cellular proliferation. This protein and the product of a second closely related gene, CTBP2, can dimerize. Both proteins can also interact with a polycomb group protein complex which participates in regulation of gene expression during development. Alternative splicing of transcripts from this gene results in multiple transcript variants. [provided by RefSeq, Jul 2008],



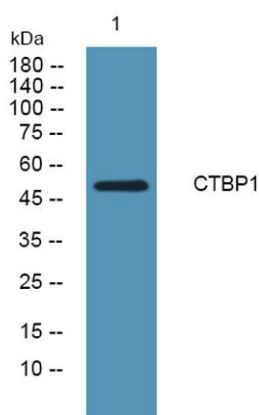
**Western Blot analysis of Jurkat cells using CtBP1 Polyclonal Antibody**



**Immunohistochemistry analysis of paraffin-embedded human breast carcinoma tissue, using CtBP1 Antibody. The picture on the right is blocked with the synthesized peptide.**



**Western blot analysis of lysates from Jurkat cells, using CtBP1 Antibody. The lane on the right is blocked with the synthesized peptide.**



**Western blot analysis of lysates from SW480 cells, primary antibody was diluted at 1:1000, 4°over night**