

ZNF420 rabbit pAb**Cat#: orb767753 (Manual)**

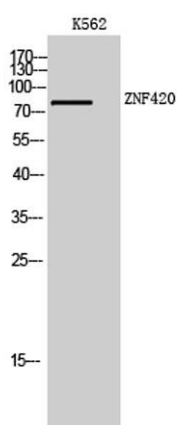
For research use only. Not intended for diagnostic use.

Product Name	ZNF420 rabbit pAb
Host species	Rabbit
Applications	WB;ELISA
Species Cross-Reactivity	Human;Mouse
Recommended dilutions	Western Blot: 1/500 - 1/2000. ELISA: 1/40000. Not yet tested in other applications.
Immunogen	The antiserum was produced against synthesized peptide derived from human ZNF420. AA range:301-350
Specificity	ZNF420 Polyclonal Antibody detects endogenous levels of ZNF420 protein.
Formulation	Liquid in PBS containing 50% glycerol, 0.5% BSA and 0.02% sodium azide..
Storage	Store at -20°C. Avoid repeated freeze-thaw cycles.
Protein Name	Zinc finger protein 420
Gene Name	ZNF420
Cellular localization	Nucleus .
Purification	The antibody was affinity-purified from rabbit antiserum by affinity-chromatography using epitope-specific immunogen.
Clonality	Polyclonal

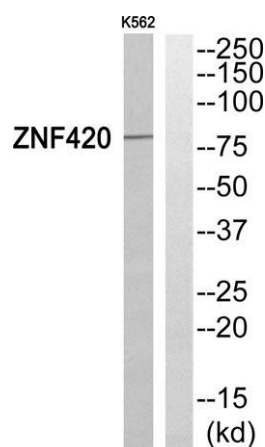
Concentration	1 mg/ml
Observed band	80kD
Human Gene ID	147923
Human Swiss-Prot Number	Q8TAQ5
Alternative Names	ZNF420; Zinc finger protein 420

Background

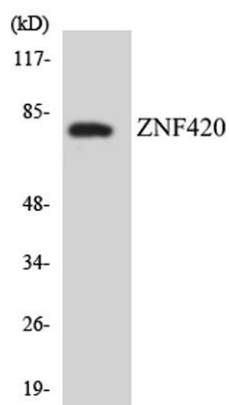
zinc finger protein 420(ZNF420) Homo sapiens The protein encoded by this gene is a KRAB-type zinc finger protein that negatively-regulates p53-mediated apoptosis. Under stress conditions, the encoded protein is phosphorylated by ATM and dissociates from p53, which activates p53 and initiates apoptosis. [provided by RefSeq, Jul 2016],



Western Blot analysis of K562 cells using ZNF420 Polyclonal Antibody. Secondary antibody(catalog#:RS0002) was diluted at 1:20000 cells nucleus extracted by Minute TM Cytoplasmic and Nuclear Fractionation kit (SC-003, Invent biotech, MN, USA).



Western blot analysis of ZNF420 Antibody. The lane on the right is blocked with the ZNF420 peptide.



Western blot analysis of the lysates from COLO205 cells using ZNF420 antibody.