

## Neurocan rabbit pAb

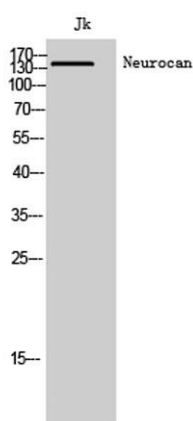
**Cat#: orb767744 (Manual)**

For research use only. Not intended for diagnostic use.

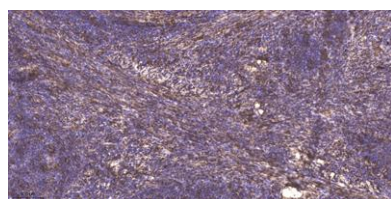
<b>Product Name</b>	Neurocan rabbit pAb
<b>Host species</b>	Rabbit
<b>Applications</b>	WB;IHC
<b>Species Cross-Reactivity</b>	Human;Rat;Mouse;
<b>Recommended dilutions</b>	WB 1:500-2000;IHC-p 1:50-300
<b>Immunogen</b>	Synthesized peptide derived from Neurocan . at AA range: 370-450
<b>Specificity</b>	Neurocan Polyclonal Antibody detects endogenous levels of Neurocan protein.
<b>Formulation</b>	Liquid in PBS containing 50% glycerol, 0.5% BSA and 0.02% sodium azide..
<b>Storage</b>	Store at -20°C. Avoid repeated freeze-thaw cycles.
<b>Protein Name</b>	Neurocan core protein
<b>Gene Name</b>	NCAN
<b>Cellular localization</b>	Secreted .
<b>Purification</b>	The antibody was affinity-purified from rabbit antiserum by affinity-chromatography using      epitope-specific immunogen.
<b>Clonality</b>	Polyclonal

<b>Concentration</b>	1 mg/ml
<b>Observed band</b>	145kD
<b>Human Gene ID</b>	1463
<b>Human Swiss-Prot Number</b>	O14594
<b>Alternative Names</b>	NCAN; CSPG3; NEUR; Neurocan core protein; Chondroitin sulfate proteoglycan 3

**Background** Neurocan is a chondroitin sulfate proteoglycan thought to be involved in the modulation of cell adhesion and migration.[supplied by OMIM, Jul 2002],



**Western Blot analysis of Jk cells using Neurocan Polyclonal Antibody**



**Immunohistochemical analysis of paraffin-embedded human cervical carcinoma.** 1, Antibody was diluted at 1:200(4<sup>o</sup> overnight). 2, Tris-EDTA,pH9.0 was used for antigen retrieval. 3,Secondary antibody was diluted at 1:200(room temperature, 45min).