

**CMTM2 rabbit pAb****Cat#: orb767743 (Manual)**

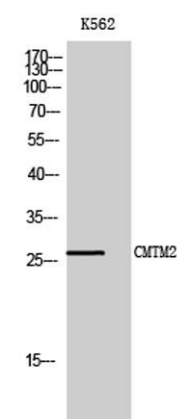
For research use only. Not intended for diagnostic use.

<b>Product Name</b>	CMTM2 rabbit pAb
<b>Host species</b>	Rabbit
<b>Applications</b>	WB;ELISA
<b>Species Cross-Reactivity</b>	Human;Rat;Mouse;
<b>Recommended dilutions</b>	Western Blot: 1/500 - 1/2000. ELISA: 1/40000. Not yet tested in other applications.
<b>Immunogen</b>	The antiserum was produced against synthesized peptide derived from human CKLF2. AA range:171-220
<b>Specificity</b>	CMTM2 Polyclonal Antibody detects endogenous levels of CMTM2 protein.
<b>Formulation</b>	Liquid in PBS containing 50% glycerol, 0.5% BSA and 0.02% sodium azide..
<b>Storage</b>	Store at -20°C. Avoid repeated freeze-thaw cycles.
<b>Protein Name</b>	CKLF-like MARVEL transmembrane domain-containing protein 2
<b>Gene Name</b>	CMTM2
<b>Cellular localization</b>	Membrane; Multi-pass membrane protein.
<b>Purification</b>	The antibody was affinity-purified from rabbit antiserum by affinity-chromatography using epitope-specific immunogen.
<b>Clonality</b>	Polyclonal

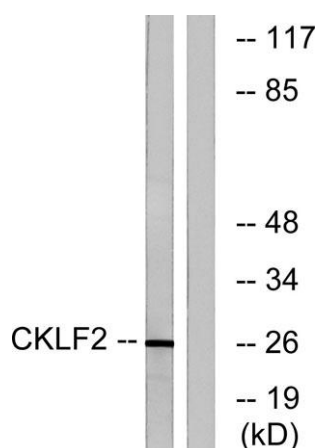
<b>Concentration</b>	1 mg/ml
<b>Observed band</b>	27kD
<b>Human Gene ID</b>	146225
<b>Human Swiss-Prot Number</b>	Q8TAZ6
<b>Alternative Names</b>	CMTM2; CKLFSF2; CKLF-like MARVEL transmembrane domain-containing protein 2; Chemokine-like factor superfamily member 2

### Background

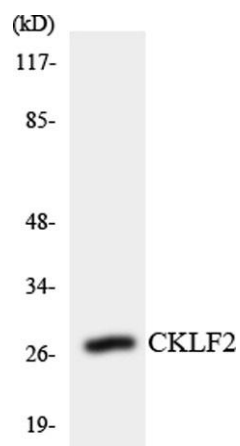
This gene belongs to the chemokine-like factor gene superfamily, a novel family that links the chemokine and the transmembrane 4 superfamilies of signaling molecules. The protein encoded by this gene may play an important role in testicular development. [provided by RefSeq, Jul 2008],



Western Blot analysis of K562 cells using CMTM2 Polyclonal Antibody



Western blot analysis of lysates from K562 cells, using CKLF2 Antibody. The lane on the right is blocked with the synthesized peptide.



Western blot analysis of the lysates from COLO205 cells using CKLF2 antibody.