

Casein Kinase I δ rabbit pAb**Cat#: orb767733 (Manual)**

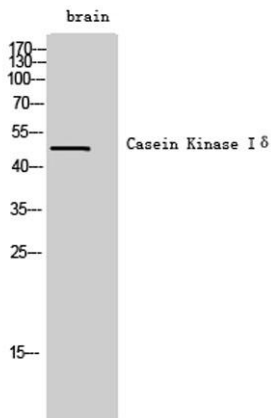
For research use only. Not intended for diagnostic use.

Product Name	Casein Kinase I δ rabbit pAb
Host species	Rabbit
Applications	WB;ELISA
Species Cross-Reactivity	Human;Mouse;Rat
Recommended dilutions	Western Blot: 1/500 - 1/2000. ELISA: 1/40000. Not yet tested in other applications.
Immunogen	The antiserum was produced against synthesized peptide derived from human CSNK1D. AA range:291-340
Specificity	Casein Kinase I δ Polyclonal Antibody detects endogenous levels of Casein Kinase I δ protein.
Formulation	Liquid in PBS containing 50% glycerol, 0.5% BSA and 0.02% sodium azide..
Storage	Store at -20°C. Avoid repeated freeze-thaw cycles.
Protein Name	Casein kinase I isoform delta
Gene Name	CSNK1D
Cellular localization	Cytoplasm. Nucleus. Cytoplasm, cytoskeleton, microtubule organizing center, centrosome . Cytoplasm, perinuclear region. Cell membrane. Cytoplasm, cytoskeleton, spindle. Golgi apparatus. Localized at mitotic spindle microtubules, and at the centrosomes and
Purification	The antibody was affinity-purified from rabbit antiserum by affinity-chromatography using epitope-specific immunogen.

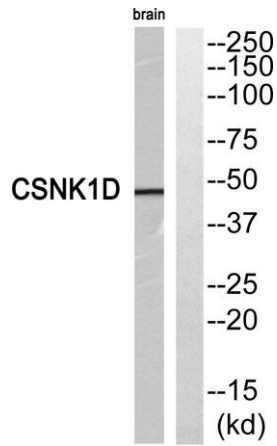
Clonality	Polyclonal
Concentration	1 mg/ml
Observed band	47kD
Human Gene ID	1453
Human Swiss-Prot Number	P48730
Alternative Names	CSNK1D; HCKID; Casein kinase I isoform delta; CKI-delta; CKId; Tau-protein kinase CSNK1D

Background

This gene is a member of the casein kinase I (CKI) gene family whose members have been implicated in the control of cytoplasmic and nuclear processes, including DNA replication and repair. The encoded protein may also be involved in the regulation of apoptosis, circadian rhythm, microtubule dynamics, chromosome segregation, and p53-mediated effects on growth. The encoded protein is highly similar to the mouse and rat CK1 delta homologs. Three transcript variants encoding different isoforms have been found for this gene. [provided by RefSeq, Feb 2014],



Western Blot analysis of brain cells using Casein Kinase I δ Polyclonal Antibody



Western blot analysis of CSNK1D Antibody. The lane on the right is blocked with the CSNK1D peptide.