

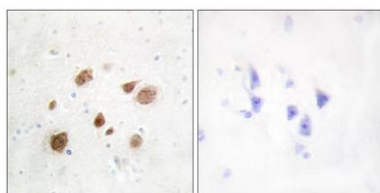
CaMKI β rabbit pAb

Cat#: orb767693 (Manual)

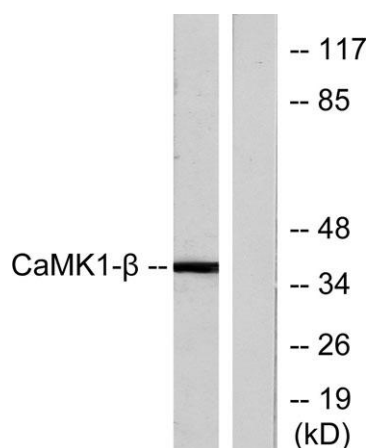
For research use only. Not intended for diagnostic use.

Product Name	CaMKI β rabbit pAb
Host species	Rabbit
Applications	WB;IHC;IF;ELISA
Species Cross-Reactivity	Human;Mouse;Rat
Recommended dilutions	Western Blot: 1/500 - 1/2000. Immunohistochemistry: 1/100 - 1/300. ELISA: 1/10000. Not yet tested in other applications.
Immunogen	The antiserum was produced against synthesized peptide derived from human CaMK1-beta. AA range:161-210
Specificity	CaMKI β Polyclonal Antibody detects endogenous levels of CaMKI β protein.
Formulation	Liquid in PBS containing 50% glycerol, 0.5% BSA and 0.02% sodium azide..
Storage	Store at -20°C. Avoid repeated freeze-thaw cycles.
Protein Name	Calcium/calmodulin-dependent protein kinase type 1B
Gene Name	PNCK
Cellular localization	Cytoplasm . Nucleus .
Purification	The antibody was affinity-purified from rabbit antiserum by affinity-chromatography using epitope-specific immunogen.
Clonality	Polyclonal

Concentration	1 mg/ml
Observed band	38kD
Human Gene ID	139728
Human Swiss-Prot Number	Q6P2M8
Alternative Names	PNCK; Calcium/calmodulin-dependent protein kinase type 1B; CaM kinase I beta; CaM kinase IB; CaM-KI beta; CaMKI-beta; Pregnancy up-regulated non-ubiquitously-expressed CaM kinase
Background	PNCK is a member of the calcium/calmodulin-dependent protein kinase family of protein serine/threonine kinases (see CAMK1; MIM 604998) (Gardner et al., 2000 [PubMed 10673339]).[supplied by OMIM, Mar 2008],



Immunohistochemistry analysis of paraffin-embedded human brain tissue, using CaMK1-beta Antibody. The picture on the right is blocked with the synthesized peptide.



Western blot analysis of lysates from LOVO cells, treated with H₂O₂ 100uM 30', using CaMK1-beta Antibody. The lane on the right is blocked with the synthesized peptide.