

ApoOL rabbit pAb**Cat#: orb767691 (Manual)**

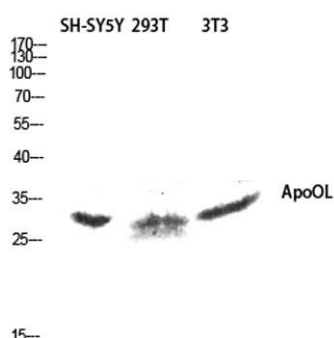
For research use only. Not intended for diagnostic use.

Product Name	ApoOL rabbit pAb
Host species	Rabbit
Applications	WB;ELISA
Species Cross-Reactivity	Human;Mouse;Rat
Recommended dilutions	Western Blot: 1/500 - 1/2000. ELISA: 1/40000. Not yet tested in other applications.
Immunogen	The antiserum was produced against synthesized peptide derived from human APOOL. AA range:219-268
Specificity	ApoOL Polyclonal Antibody detects endogenous levels of ApoOL protein.
Formulation	Liquid in PBS containing 50% glycerol, 0.5% BSA and 0.02% sodium azide..
Storage	Store at -20°C. Avoid repeated freeze-thaw cycles.
Protein Name	Apolipoprotein O-like
Gene Name	APOOL
Cellular localization	Mitochondrion inner membrane ; Multi-pass membrane protein . Mitochondrion .
Purification	The antibody was affinity-purified from rabbit antiserum by affinity-chromatography using epitope-specific immunogen.
Clonality	Polyclonal

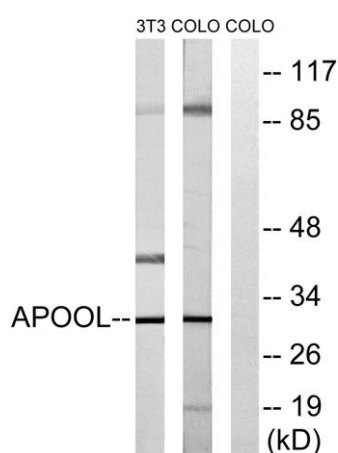
Concentration	1 mg/ml
Observed band	30kD
Human Gene ID	139322
Human Swiss-Prot Number	Q6UXV4
Alternative Names	APOOL; CXorf33; FAM121A; Apolipoprotein O-like; Protein FAM121A

Background

This gene encodes a protein which contains an apolipoprotein O superfamily domain. This domain is found on proteins in circulating lipoprotein complexes. [provided by RefSeq, Sep 2011],



Western blot analysis of SH-SY5Y 293T 3T3 lysis using ApoOL antibody. Antibody was diluted at 1:1000



Western blot analysis of lysates from COLO and NIH/3T3 cells, using APOOL Antibody. The lane on the right is blocked with the synthesized peptide.