

Claudin-7 (phospho Tyr210) rabbit pAb**Cat#: orb767667 (Manual)**

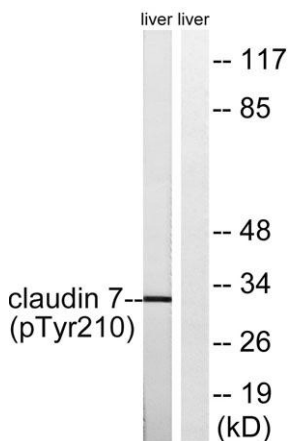
For research use only. Not intended for diagnostic use.

| | |
|---------------------------------|--|
| Product Name | Claudin-7 (phospho Tyr210) rabbit pAb |
| Host species | Rabbit |
| Applications | WB;ELISA |
| Species Cross-Reactivity | Human;Mouse;Rat |
| Recommended dilutions | Western Blot: 1/500 - 1/2000. ELISA: 1/5000. Not yet tested in other applications. |
| Immunogen | The antiserum was produced against synthesized peptide derived from human Claudin 7 around the phosphorylation site of Tyr210. AA range:162-211 |
| Specificity | Phospho-Claudin-7 (Y210) Polyclonal Antibody detects endogenous levels of Claudin-7 protein only when phosphorylated at Y210. |
| Formulation | Liquid in PBS containing 50% glycerol, 0.5% BSA and 0.02% sodium azide.. |
| Storage | Store at -20°C. Avoid repeated freeze-thaw cycles. |
| Protein Name | Claudin-7 |
| Gene Name | CLDN7 |
| Cellular localization | Cell membrane ; Multi-pass membrane protein . Basolateral cell membrane . Cell junction, tight junction . Co-localizes with EPCAM at the basolateral cell membrane and tight junction. . |
| Purification | The antibody was affinity-purified from rabbit antiserum by affinity-chromatography using epitope-specific immunogen. |

| | |
|--------------------------------|--|
| Clonality | Polyclonal |
| Concentration | 1 mg/ml |
| Observed band | 32kD |
| Human Gene ID | 1366 |
| Human Swiss-Prot Number | O95471 |
| Alternative Names | CLDN7; CEPTRL2; CPETRL2; Claudin-7; CLDN-7 |

Background

This gene encodes a member of the claudin family. Claudins are integral membrane proteins and components of tight junction strands. Tight junction strands serve as a physical barrier to prevent solutes and water from passing freely through the paracellular space between epithelial or endothelial cell sheets, and also play critical roles in maintaining cell polarity and signal transductions. Differential expression of this gene has been observed in different types of malignancies, including breast cancer, ovarian cancer, hepatocellular carcinomas, urinary tumors, prostate cancer, lung cancer, head and neck cancers, thyroid carcinomas, etc.. Alternatively spliced transcript variants encoding different isoforms have been found.[provided by RefSeq, May 2010],



Western blot analysis of lysates from rat liver, using Claudin 7 (Phospho-Tyr210) Antibody. The lane on the right is blocked with the phospho peptide.