

## Adenosine A1-R rabbit pAb

**Cat#: orb767646 (Manual)**

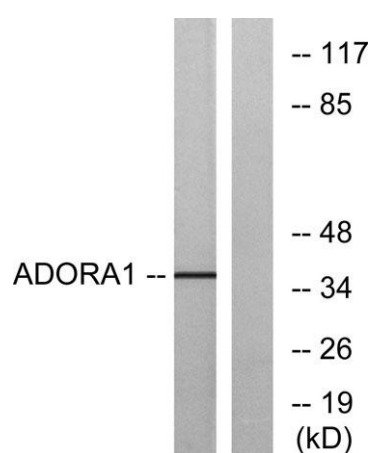
For research use only. Not intended for diagnostic use.

<b>Product Name</b>	Adenosine A1-R rabbit pAb
<b>Host species</b>	Rabbit
<b>Applications</b>	WB;IF;ELISA
<b>Species Cross-Reactivity</b>	Human;Rat
<b>Recommended dilutions</b>	Western Blot: 1/500 - 1/2000. Immunofluorescence: 1/200 - 1/1000. ELISA: 1/20000. Not yet tested in other applications.
<b>Immunogen</b>	The antiserum was produced against synthesized peptide derived from human ADORA1. AA range:277-326
<b>Specificity</b>	Adenosine A1-R Polyclonal Antibody detects endogenous levels of Adenosine A1-R protein.
<b>Formulation</b>	Liquid in PBS containing 50% glycerol, 0.5% BSA and 0.02% sodium azide..
<b>Storage</b>	Store at -20°C. Avoid repeated freeze-thaw cycles.
<b>Protein Name</b>	Adenosine receptor A1
<b>Gene Name</b>	ADORA1
<b>Cellular localization</b>	Cell membrane ; Multi-pass membrane protein.
<b>Purification</b>	The antibody was affinity-purified from rabbit antiserum by affinity-chromatography using epitope-specific immunogen.
<b>Clonality</b>	Polyclonal

<b>Concentration</b>	1 mg/ml
<b>Observed band</b>	37kD
<b>Human Gene ID</b>	134
<b>Human Swiss-Prot Number</b>	P30542
<b>Alternative Names</b>	ADORA1; Adenosine receptor A1

### Background

The protein encoded by this gene is an adenosine receptor that belongs to the G-protein coupled receptor 1 family. There are 3 types of adenosine receptors, each with a specific pattern of ligand binding and tissue distribution, and together they regulate a diverse set of physiologic functions. The type A1 receptors inhibit adenylyl cyclase, and play a role in the fertilization process. Animal studies also suggest a role for A1 receptors in kidney function and ethanol intoxication. Transcript variants with alternative splicing in the 5' UTR have been found for this gene. [provided by RefSeq, Jul 2008],



**Western blot analysis of lysates from MCF-7 cells, using ADORA1 Antibody. The lane on the right is blocked with the synthesized peptide.**