

**COL19A1 rabbit pAb****Cat#: orb767634 (Manual)**

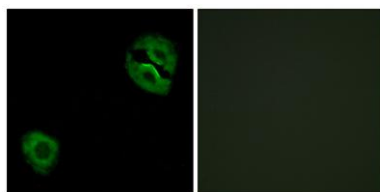
For research use only. Not intended for diagnostic use.

<b>Product Name</b>	COL19A1 rabbit pAb
<b>Host species</b>	Rabbit
<b>Applications</b>	WB;IHC;IF;ELISA
<b>Species Cross-Reactivity</b>	Human;Rat;Mouse;
<b>Recommended dilutions</b>	Western Blot: 1/500 - 1/2000. Immunohistochemistry: 1/100 - 1/300. Immunofluorescence: 1/200 - 1/1000. ELISA: 1/10000. Not yet tested in other applications.
<b>Immunogen</b>	The antiserum was produced against synthesized peptide derived from human Collagen XIX alpha1. AA range:421-470
<b>Specificity</b>	COL19A1 Polyclonal Antibody detects endogenous levels of COL19A1 protein.
<b>Formulation</b>	Liquid in PBS containing 50% glycerol, 0.5% BSA and 0.02% sodium azide..
<b>Storage</b>	Store at -20°C. Avoid repeated freeze-thaw cycles.
<b>Protein Name</b>	Collagen alpha-1(XIX) chain
<b>Gene Name</b>	COL19A1
<b>Cellular localization</b>	Secreted, extracellular space, extracellular matrix .
<b>Purification</b>	The antibody was affinity-purified from rabbit antiserum by affinity-chromatography using epitope-specific immunogen.
<b>Clonality</b>	Polyclonal

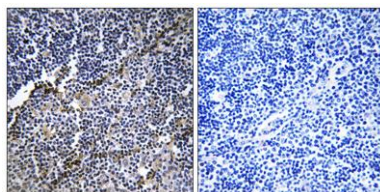
<b>Concentration</b>	1 mg/ml
<b>Observed band</b>	120kD
<b>Human Gene ID</b>	1310
<b>Human Swiss-Prot Number</b>	Q14993
<b>Alternative Names</b>	COL19A1; Collagen alpha-1(XIX) chain; Collagen alpha-1(Y) chain

## Background

This gene encodes the alpha chain of type XIX collagen, a member of the FACIT collagen family (fibril-associated collagens with interrupted helices). Although the function of this collagen is not known, other members of this collagen family are found in association with fibril-forming collagens such as type I and II, and serve to maintain the integrity of the extracellular matrix. The transcript produced from this gene has an unusually large 3' UTR which has not been completely sequenced. [provided by RefSeq, Jul 2008],



**Immunofluorescence analysis of A549 cells, using Collagen XIX alpha1 Antibody. The picture on the right is blocked with the synthesized peptide.**



**Immunohistochemistry analysis of paraffin-embedded human thymus gland tissue, using Collagen XIX alpha1 Antibody. The picture on the right is blocked with the synthesized peptide.**



Explore. Bioreagents.

[www.biorbyt.com](http://www.biorbyt.com)

Biorbyt Ltd  
7 Signet Court, Swann Road, Cambridge, CB5 8LA. United Kingdom  
Email: [info@biorbyt.com](mailto:info@biorbyt.com) | Phone: +44 (0)1223 859-353 | Fax: +44 (0)1223 280-240

Biorbyt LLC  
68 TW Alexander Drive, Durham, NC 27709. United States  
Email: [info@biorbyt.com](mailto:info@biorbyt.com) | Phone: +1 (415) 906-5211 | Fax: +1 (415) 651-8558