

COL9A3 rabbit pAb**Cat#: orb767626 (Manual)**

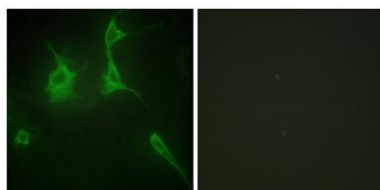
For research use only. Not intended for diagnostic use.

Product Name	COL9A3 rabbit pAb
Host species	Rabbit
Applications	IHC;IF;ELISA
Species Cross-Reactivity	Human;Rat;Mouse;
Recommended dilutions	Immunohistochemistry: 1/100 - 1/300. Immunofluorescence: 1/200 - 1/1000. ELISA: 1/10000. Not yet tested in other applications.
Immunogen	The antiserum was produced against synthesized peptide derived from human Collagen IX alpha3. AA range:321-370
Specificity	COL9A3 Polyclonal Antibody detects endogenous levels of COL9A3 protein.
Formulation	Liquid in PBS containing 50% glycerol, 0.5% BSA and 0.02% sodium azide..
Storage	Store at -20°C. Avoid repeated freeze-thaw cycles.
Protein Name	Collagen alpha-3(IX) chain
Gene Name	COL9A3
Cellular localization	Secreted, extracellular space, extracellular matrix .
Purification	The antibody was affinity-purified from rabbit antiserum by affinity-chromatography using epitope-specific immunogen.
Clonality	Polyclonal

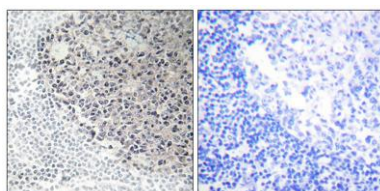
Concentration	1 mg/ml
Observed band	
Human Gene ID	1299
Human Swiss-Prot Number	Q14050
Alternative Names	COL9A3; Collagen alpha-3(IX) chain

Background

This gene encodes one of the three alpha chains of type IX collagen, the major collagen component of hyaline cartilage. Type IX collagen, a heterotrimeric molecule, is usually found in tissues containing type II collagen, a fibrillar collagen. Mutations in this gene are associated with multiple epiphyseal dysplasia type 3. [provided by RefSeq, Jan 2010],



Immunofluorescence analysis of NIH/3T3 cells, using Collagen IX alpha3 Antibody. The picture on the right is blocked with the synthesized peptide.



Immunohistochemistry analysis of paraffin-embedded human tonsil tissue, using Collagen IX alpha3 Antibody. The picture on the right is blocked with the synthesized peptide.